



www.urma.ch



**Innovation Is
Our Tool**

SWISS  QUALITY

URMA Reaming

Ø 7.600 – 13.100 mm

Ø 11.900 – 140.600 mm

Ø 5.800 – 33.000 mm

Indice

Table of Contents

RX small


9

Panoramica Prodotti	Product Overview	10
Inserti	Inserts	12
Barra Portainseriti	Insert Holder	13
Dimensione Inserto / Esempio d'ordine	Insert Size / Order Example	14
Mandrino a Compensazione / Mandrino Flottante	Compensation Holder / Floating Chuck	16
Accessori	Accessories	22

RX medium


27

Panoramica Prodotti	Product Overview	28
Inserti	Inserts	30
Dimensione Inserto / Esempio d'ordine	Insert Size / Order Example	32
Barra Portainseriti Ø 11,900 – 35,600 mm	Insert Holder Ø 11,900 – 35,600 mm	35
Mandrino a Compensazione / Mandrino Flottante	Compensation Holder / Floating Chuck	38
Barra Portainseriti Ø 35,601 – 140,600 mm	Insert Holder Ø 35,601 – 140,600 mm	46
Adattatori e Attacco	Adaptors and Shanks	48
Moduli Adattatori	Module Holders	57
Accessori	Accessories	59

RM vario


67

Panoramica Prodotti	Product Overview	68
Alesatori Monoblocco	Monoblock Reamers	70
Esempio d'ordine	Order Example	81
Mandrino a Compensazione / Mandrino Flottante	Compensation Holder / Floating Chuck	82
Accessori	Accessories	88

Ø 7.600 – 140.600 mm

Vantaggi dell'Utilizzo di RX small e RX medium

Advantages of Using RX small and RX medium



Sistema di Alesatura con inserto intercambiabile

Sistema di Alesatura Modulare con diametro da 7,600 mm a 140,600 mm

Semplice da maneggiare

Cambio inserto facile e veloce

Massima precisione di posizionamento

Massima ripetibilità ad ogni cambio inserto

Più ampia gamma di prodotti standard

Diametro specifico cliente senza sovrapprezzo

Alta flessibilità

Materiali da taglio e il sistema di inserti-gambo forniscono un'elevata flessibilità

Bassi costi per parte

Significativa riduzione dei costi grazie all'aumento della produttività e alla diminuzione del fermo macchina

Replaceable Insert Reaming System

Modular reaming system with diameter from 7,600 mm to 140,600 mm

Simple Handling

Fast and simple insert change

Highest Precision in Positioning Accuracy

Highest repeatability on each insert change

Largest Standard Product Line

Customer-specific diameter without any surcharge

High Flexibility

Cutting materials, insert and shank system provide a high level of flexibility

Low Costs per Part

Significant cost reduction thanks to increased productivity and minimum machine down-times

RX small: page 9

RX medium: page 27

Ø 5.80 – 33.10 mm

Vantaggi dell'Utilizzo di RM vario

Advantages of Using RM vario



Alesatori Monoblocco

Utensile alesatore monoblocco fisso e regolabile nel range diametro compreso tra 5,800 mm e 33,100 mm

Materiali di taglio e rivestimenti

Materiali di taglio e rivestimenti affidabili, garantiscono risultati stabili

Alta Flessibilità

Grazie alla regolabilità degli alesatori, il diametro può essere adattato alle proprietà del materiale o alle tolleranze

Varietà dell'offerta

Gli alesatori sono disponibili nelle versioni lunga e corta con o senza alimentazione interna del refrigerante

Economico

La riaffilatura e / o il riposizionamento possono ridurre i costi degli utensili

Monoblock Reamers

Fixed and adjustable monoblock reaming tool in a diameter range from 5,800 mm to 33,100 mm

Cutting Materials and Coatings

Reliable cutting materials and coatings guarantee stable results

High Flexibility

Thanks to adjustable reamers, the diameter can be adapted to the material properties or tolerances

Offer Variety

The reamers are available in long and short versions as with or without internal coolant supply

Economic Viability

Tool costs can be reduced by regrinding and/or retipping

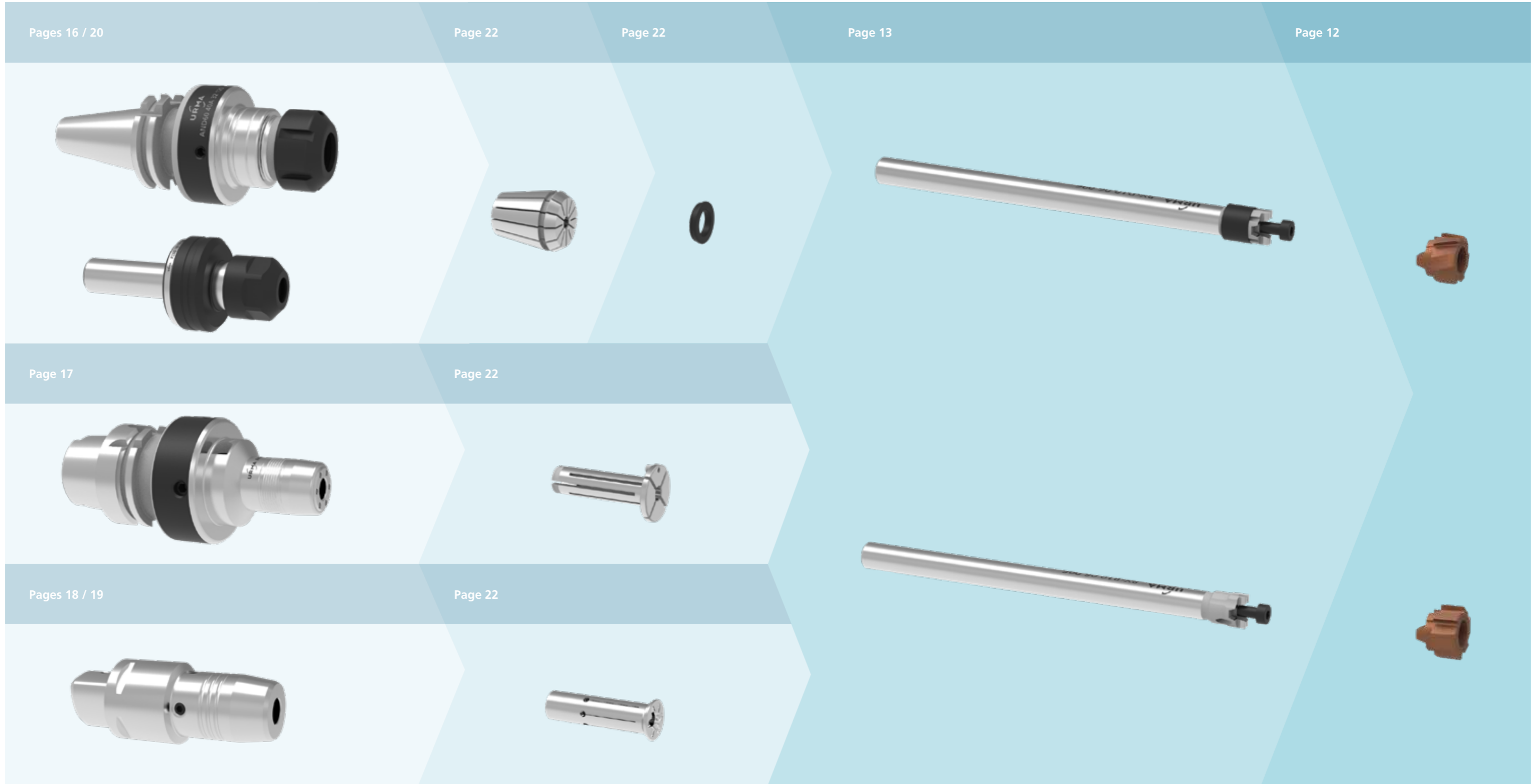
RM vario: page 67

URMA Reaming
RX small

Ø 7.600 – 13.100 mm

Ø 7.600 – 13.100 mm

URMA Reaming RX small



Ø 7.600 – 13.100 mm



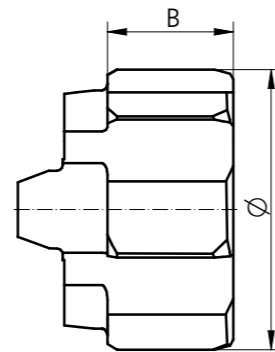
Inserti

Inserts

Inserti Scanalati Dritti (RXsG)

Straight Fluted Inserts

System Size	Ø-Range	B	z	MB	VE	Order Number	Stock
RXs 08	7.600 - 8.100	4.5	4	3	5	RXsG...	▲
RXs 10	8.101 - 9.600	4.5	6	3	5	Order example page 15	▲
RXs 11	9.601 - 11.100	4.5	6	3	5		▲
RXs 13	11.101 - 13.100	4.5	6	3	5		▲



Inserti Scanalati Elicoidali Sinistri (RXsL)

Left Helical Fluted Inserts

System Size	Ø-Range	B	z	MB	VE	Order Number	Stock
RXs 08	7.600 - 8.100	4.5	4	3	5	RXsL...	▲
RXs 10	8.101 - 9.600	4.5	6	3	5	Order example page 15	▲
RXs 11	9.601 - 11.100	4.5	6	3	5		▲
RXs 13	11.101 - 13.100	4.5	6	3	5		▲

z Numero di denti
MB Ordine Minimo
VE Quantità a confezione

z Number of teeth
MB Minimum order quantity
VE Packaging quantity

● A magazzino On stock
▲ Disponibilità in breve periodo Short-term availability
○ Disponibilità su richiesta Availability on request

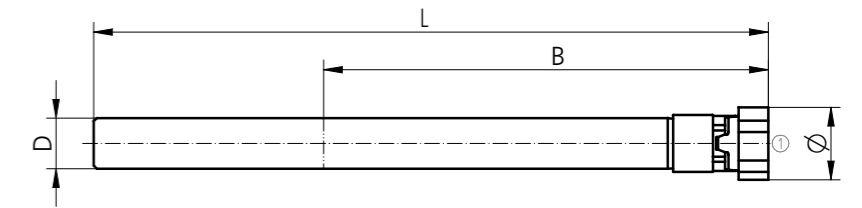
Tutte le dimensioni in mm
All dimensions in mm

Ø 7.600 – 13.100 mm



Barra Portainseriti

Insert Holders



Versione Corta (Acciaio)

Short Version (Steel)



System Size	Ø-Range	L	B	D _{h6}	Order Number "D"	Order Number "B"	Stock
RXs 08	7.600 - 8.100	86	50	6	RXsD08 06 086	RXsB08 06 086	●
RXs 10	8.101 - 9.600	96	60	6	RXsD10 06 096	RXsB10 06 096	●
RXs 11	9.601 - 11.100	106	70	8	RXsD11 08 106	RXsB11 08 106	●
RXs 13	11.101 - 13.100	120	84	8	RXsD13 08 120	RXsB13 08 120	●

Versione Lunga (Carburo)

Long Version (Carbide)



System Size	Ø-Range	L	B	D _{h6}	Order Number "D"	Order Number "B"	Stock
RXs 08	7.600 - 8.100	102	66	6	RXsD08 06 102HM	RXsB08 06 102HM	●
RXs 10	8.101 - 9.600	116	80	6	RXsD10 06 116HM	RXsB10 06 116HM	●
RXs 11	9.601 - 11.100	126	90	8	RXsD11 08 126HM	RXsB11 08 126HM	●
RXs 13	11.101 - 13.100	150	114	8	RXsD13 08 150HM	RXsB13 08 150HM	●

RXsD = Foro Passante
RXsB = Foro Cieco

RXsD = Through bore
RXsB = Blind bore

Tutte le barre portainseriti possono essere accorciate alla lunghezza ottimale su richiesta (a pagamento)
All insert holders can be shortened to the optimal length on request (for surcharge)

Incluso nella fornitura: 1 vite di ricambio e Chiave Torx®

Scope of delivery: Including 1 spare screw and Torx®-Torque wrench

Parti di Ricambio

Spare Parts "D"

System Size	①
RXs 08	C00 90 51
RXs 10	C00 90 52
RXs 11	C00 90 53
RXs 13	C00 90 54

Parti di Ricambio

Spare Parts "B"

System Size	①
RXs 08	C00 90 51
RXs 10	C00 90 52
RXs 11	C00 90 53B
RXs 13	C00 90 54B

● A magazzino On stock
▲ Disponibilità in breve periodo Short-term availability
○ Disponibilità su richiesta Availability on request

Tutte le dimensioni in mm
All dimensions in mm

Come Selezionare la Misura dell'Inserto

Explanation of Insert Size

Per ordini con specifiche riguardo le tolleranze del foro, il diametro è definito dagli standard URMA. A seconda del range di tolleranza, il diametro finale sarà tra il 65% e l'80% della tolleranza complessiva.

Esempio Dicitura Inserto Standard

RXsG8H7-A01U2 F0512R1
inserto rettificato \varnothing 8,011 mm

RXsG8+20-10-A01U1 F0514R1
inserto rettificato \varnothing 8,015 mm

L'inserto-Q è da selezionare qualora si desideri una dimensione specifica di inserto. Al contrario degli inserti standard, dove tutte le tolleranze sono riferite alla tolleranza del foro, negli inserti-Q è indicata la dimensione del diametro desiderato dell'inserto. Q-Cut è raccomandato nelle applicazioni speciali dove il range di tolleranza standard non è applicabile.

Esempio dicitura Inserto-Q

RXsG8.020Q+3-3-A01U2 F0512R1
inserto rettificato \varnothing 8,020 mm

For orders with specifications of bore tolerance, the diameter is defined by URMA standard. Depending on tolerance range, the final diameter will be within 65% to 80% of the total tolerance.

Examples for Standard Insert Designation

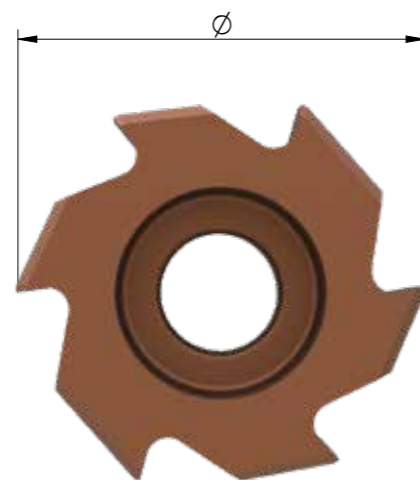
RXsG8H7-A01U2 F0512R1
insert size on \varnothing 8,011 mm

RXsG8+20-10-A01U1 F0514R1
insert size on \varnothing 8,015 mm

A Q-insert designation is to be selected for any specific insert dimension. Opposed to standard inserts where all tolerances refer to the bore tolerance, Q-inserts indicate the required insert diameter (target size). Q-inserts are recommended for special applications where standard tolerance ranges are not applicable.

Example for Q-Insert Designation

RXsG8.020Q+3-3-A01U2 F0512R1
insert size on \varnothing 8,020 mm



Come Ordinare

Order Example

	Diametro del foro Bore diameter	Tolleranza ISO ISO bore tolerances	Tolleranza fori in μm Bore tolerance in μm	Diametro inserto Insert diameter	Dimensione obiettivo (Inserto-Q) Target size (Q-Insert)
Example	Come ordinare Order example RXsG8H7-A01U2 F0512R1	Come ordinare Order example RXsG8+20-10-A01U1 F0514R1	Come ordinare Order example RXsG8.020Q+3-3-A01U2 F0512R1	Example	Example
	RXs Classificazione sistema RX small RX small system designation	RXs Classificazione sistema RX small RX small system designation	RXs Classificazione sistema RX small RX small system designation	RXs Classificazione sistema RX small RX small system designation	RXs Classificazione sistema RX small RX small system designation
	G Forma scanatura (G = dritta; L = elicoidali sinistri) Flute form (G = straight; L = left-hand helix)	G Forma scanatura (G = dritta; L = elicoidali sinistri) Flute form (G = straight; L = left-hand helix)	G Forma scanatura (G = dritta; L = elicoidali sinistri) Flute form (G = straight; L = left-hand helix)	G Forma scanatura (G = dritta; L = elicoidali sinistri) Flute form (G = straight; L = left-hand helix)	G Forma scanatura (G = dritta; L = elicoidali sinistri) Flute form (G = straight; L = left-hand helix)
Diameter	8 Diametro (mm) Diameter (mm)	8 Diametro (mm) Diameter (mm)	8 Diametro (mm) Diameter (mm)	8.020 Diametro Inserto (mm) Insert diameter (mm)	8.020 Diametro Inserto (mm) Insert diameter (mm)
	H7 Tolleranza standard ISO Tolerance in ISO standard	+20-10 Tolleranza fori (μm) Bore tolerance (μm)	+20-10 Tolleranza fori (μm) Bore tolerance (μm)	Q Codice per la dimensione dell'inserto Code for target size insert	Q Codice per la dimensione dell'inserto Code for target size insert
	A01 Geometria tagliente Cutting geometry	A01 Geometria tagliente Cutting geometry	A01 Geometria tagliente Cutting geometry	+3-3 Tolleranza di produzione (μm) Manufacturing tolerance (μm)	+3-3 Tolleranza di produzione (μm) Manufacturing tolerance (μm)
	A01 Geometria tagliente Cutting geometry	A01 Geometria tagliente Cutting geometry	A01 Geometria tagliente Cutting geometry	A01 Geometria tagliente Cutting geometry	A01 Geometria tagliente Cutting geometry
Option	U2 Preparazione bordo Edge preparation	U1 Preparazione bordo Edge preparation	U1 Preparazione bordo Edge preparation	U2 Preparazione bordo Edge preparation	U2 Preparazione bordo Edge preparation
	U2 Preparazione bordo Edge preparation	U1 Preparazione bordo Edge preparation	U1 Preparazione bordo Edge preparation	U2 Preparazione bordo Edge preparation	U2 Preparazione bordo Edge preparation
	F05 Materiale di taglio Per i dettagli, guarda "Technology Guide" Cutting material For details see "Reaming Technology Guide"	F05 Materiale di taglio Per i dettagli, guarda "Technology Guide" Cutting material For details see "Reaming Technology Guide"	F05 Materiale di taglio Per i dettagli, guarda "Technology Guide" Cutting material For details see "Reaming Technology Guide"	F05 Materiale di taglio Per i dettagli, guarda "Technology Guide" Cutting material For details see "Reaming Technology Guide"	F05 Materiale di taglio Per i dettagli, guarda "Technology Guide" Cutting material For details see "Reaming Technology Guide"
	12R Rivestimento Per i dettagli, guarda "Technology Guide" Coating For details see "Reaming Technology Guide"	14R Rivestimento Per i dettagli, guarda "Technology Guide" Coating For details see "Reaming Technology Guide"	14R Rivestimento Per i dettagli, guarda "Technology Guide" Coating For details see "Reaming Technology Guide"	12R Rivestimento Per i dettagli, guarda "Technology Guide" Coating For details see "Reaming Technology Guide"	12R Rivestimento Per i dettagli, guarda "Technology Guide" Coating For details see "Reaming Technology Guide"
	1 1 = rivestimento sottile 2 = rivestimento spesso 1 = thin coating 2 = thick coating	1 1 = rivestimento sottile 2 = rivestimento spesso 1 = thin coating 2 = thick coating	1 1 = rivestimento sottile 2 = rivestimento spesso 1 = thin coating 2 = thick coating	1 1 = rivestimento sottile 2 = rivestimento spesso 1 = thin coating 2 = thick coating	1 1 = rivestimento sottile 2 = rivestimento spesso 1 = thin coating 2 = thick coating

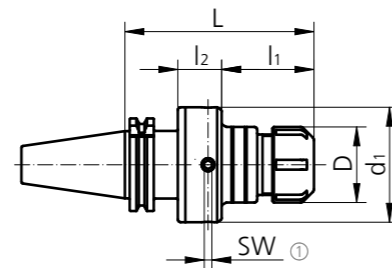
Ø 7.600 – 13.100 mm



Mandrino a Compensazione con Pinze di Serraggio
Compensation Collet Chuck

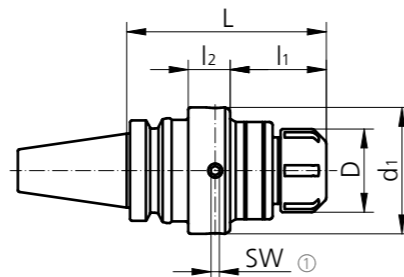
DIN 69871-AD

Size	Type	Ø-Range	L	l ₁	l ₂	D	d ₁	SW	kg	Order Number	Stock
SK 40	ER32	3.0 - 20.0	120	56	29	50	76	5	2.2	AND60 40A 32 120	▲
SK 50	ER32	3.0 - 20.0	120	61	24	50	76	5	4.1	AND60 50A 32 120	▲



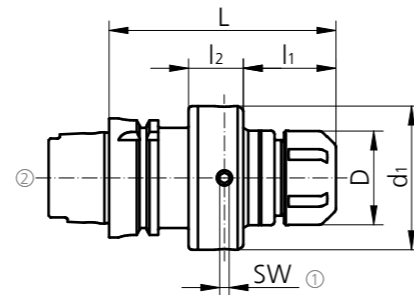
MAS-BT JIS 6339-AD

Size	Type	Ø-Range	L	l ₁	l ₂	D	d ₁	SW	kg	Order Number	Stock
BT 40	ER32	3.0 - 20.0	120	54	29	50	76	5	2.2	ANT60 40A 32 120	▲
BT 50	ER32	3.0 - 20.0	120	58	24	50	76	5	4.5	ANT60 50A 32 120	▲



DIN 69893-HSK-A

Size	Type	Ø-Range	L	l ₁	l ₂	D	d ₁	SW	kg	Order Number	Stock
HSK 63	ER32	3.0 - 20.0	120	49	29	50	76	5	2	ANH60 63A 32 120	▲
HSK 100	ER32	3.0 - 20.0	120	67	24	50	76	5	3.4	ANH60 100A 32 120	▲



Incluso nella fornitura: Dado di bloccaggio per tenuta stagna e tubo per liquidi refrigeranti

Scope of delivery: Collet nut for seal disk and coolant tube included

Pinze e rondelle pagina 22

Collets and seal disc page 22

Parti di Ricambio
Spare Parts

Size	Order Number
63	C00 03 44

Tubo per Refrigerante
Coolant Tube

Size	Order Number
63	H00 63 01
100	H00 100 01

- A magazzino On stock
- ▲ Disponibilità in breve periodo Short-term availability
- Disponibilità su richiesta Availability on request

Tutte le dimensioni in mm
All dimensions in mm

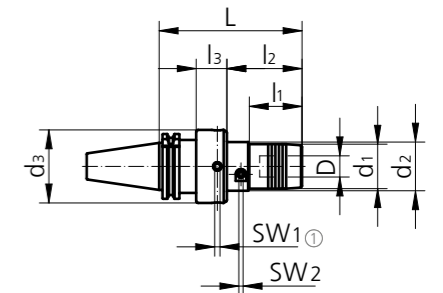
Ø 7.600 – 13.100 mm



Mandrino Idraulico a Compensazione
Compensation Hydro Chuck

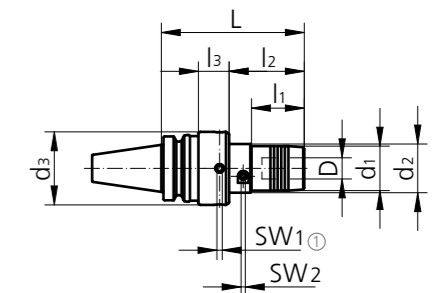
DIN 69871-AD

Size	L	l ₁	l ₂	l ₃	D	d ₁	d ₂	d ₃	SW ₁	SW ₂	kg	Order Number	Stock
SK 40	135	46	71	29	12	32	52	76	5	4	2.5	AND65 40A 12 135	●
SK 50	160	66	92	34	12	32	52	76	5	4	4.8	AND65 50A 12 160	●



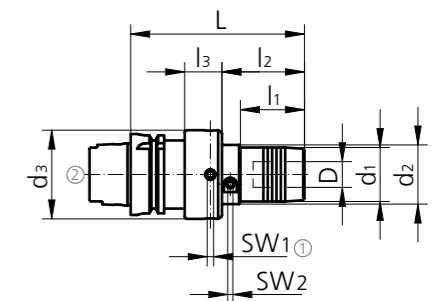
MAS-BT JIS 6339-AD

Size	L	l ₁	l ₂	l ₃	D	d ₁	d ₂	d ₃	SW ₁	SW ₂	kg	Order Number	Stock
BT 40	135	46	71	29	12	32	52	76	5	4	2.6	ANT65 40A 12 135	●
BT 50	135	46	73	24	12	32	52	76	5	4	4.8	ANT65 50A 12 135	●



DIN 69893-HSK-A

Size	L	l ₁	l ₂	l ₃	D	d ₁	d ₂	d ₃	SW ₁	SW ₂	kg	Order Number	Stock
HSK 63	135	46	64	29	12	32	52	76	5	4	2.3	ANH65 63A 12 135	●
HSK 100	135	46	82	24	12	32	52	76	5	4	3.5	ANH65 100A 12 135	●



Incluso nella fornitura Tubo per liquidi refrigeranti

Scope of delivery: Coolant tube included

Riduttori a pagina 22.

Reducers are on page 22.

Parti di Ricambio
Spare Parts

D	Order Number
12	C00 03 44
20	C00 03 44
32	C00 03 45

Tubo per Refrigerante
Coolant Tube

Size	Order Number
63	H00 63 01
100	H00 100 01

- A magazzino On stock
- ▲ Disponibilità in breve periodo Short-term availability
- Disponibilità su richiesta Availability on request

Tutte le dimensioni in mm
All dimensions in mm

Ø 7.600 – 13.100 mm

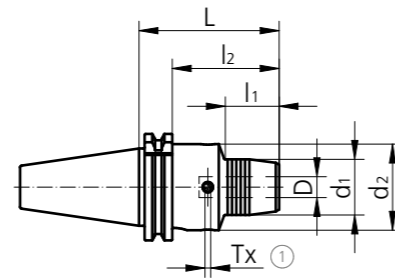


Mandrino Idraulico Espandibile SCHUNK «Tendo Zero»

Schunk "Tendo Zero" Compensation Hydro Chuck

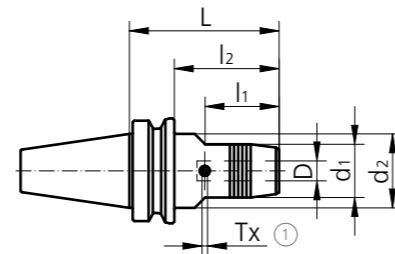
DIN 69871-AD/B

Size	L	l ₁	l ₂	D	d ₁	d ₂	Tx	kg	Schunk Order Number	Stock
SK 40	81	34	62	20	42	50	T15	1.4	204266 Z	▲
SK 50	81	34	62	20	42	50	T15	3.3	204246 Z	▲



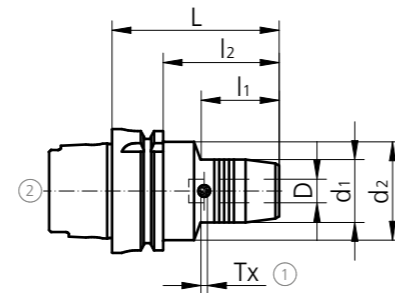
MAS-BT JIS 6339-AD/B

Size	L	l ₁	l ₂	D	d ₁	d ₂	Tx	kg	Schunk Order Number	Stock
BT 30	90	48	63	20	42	45	T15	1.5	205636 Z	▲
BT 40	90	48	63	20	42	45	T15	1.5	204445 Z	▲
BT 50	90	34	52	20	42	45	T15	4	204457 Z	▲



DIN 69893-HSK-A

Size	L	l ₁	l ₂	D	d ₁	d ₂	Tx	kg	Schunk Order Number	Stock
HSK 63	90	48	64	20	42	50	T15	1.3	204056 Z*	▲
HSK 100	105	59	76	20	42	50	T15	2.8	204066 Z*	▲



* Tubo per liquidi di raffreddamento non incluso. Riduttori a pagina 22.

* Coolant tube is not included.

per altre informazioni www.schunk.com

Reducers are on page 22.

For further dimensions see www.schunk.com

Parti di Ricambio Spare Parts

①
9954676

Tubo per Refrigerante Coolant Tube

Size	②
63	H00 63 01
100	H00 100 01

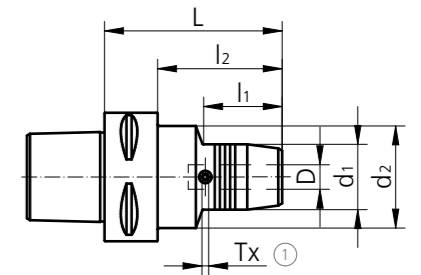
● A magazzino On stock ▲ Disponibilità in breve periodo Short-term availability ○ Disponibilità su richiesta Availability on request

Tutte le dimensioni in mm
All dimensions in mm

Ø 7.600 – 13.100 mm

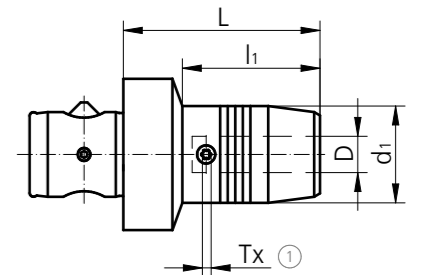
ISO 26623-1-PSC

Size	L	l ₁	l ₂	D	d ₁	d ₂	Tx	kg	Schunk Order Number	Stock
PSC 50	90	52	-	20	42	50	T15	1.05	201846 Z	▲
PSC 63	97	55	-	20	42	63	T15	1.6	201856 Z	▲



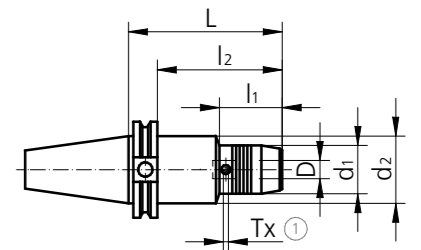
ABS-H

Size	L	l ₁	l ₂	D	d ₁	d ₂	Tx	kg	Schunk Order Number	Stock
ABS 50	75	58	-	20	42	-	T15	0.9	204576 Z	▲



ASME B5.50-CAT-AD/B

Size	L	l ₁	l ₂	D	d ₁	d ₂	Tx	kg	Schunk Order Number	Stock
CAT 40	102	50	83	20	38	45	T15	2	203666 Z	○
CAT 50	102	50	83	20	42	70	T15	2.8	204666 Z	○



Riduttori a pagina 22.

per altre informazioni www.schunk.com

Reducers are on page 22.

For further dimensions see www.schunk.com

Parti di Ricambio Spare Parts

①
9954676

● A magazzino On stock ▲ Disponibilità in breve periodo Short-term availability ○ Disponibilità su richiesta Availability on request

Tutte le dimensioni in mm
All dimensions in mm

Ø 7.600 – 13.100 mm



Mandrino Flottante

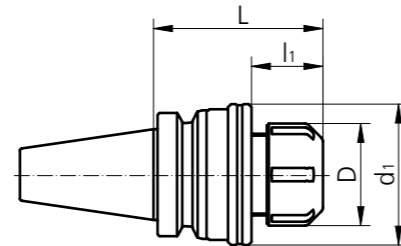
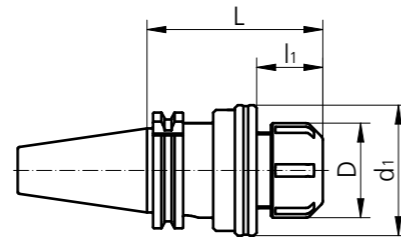
Floating Chuck

DIN 69871-AD

Size	Type	Ø-Range	L	l ₁	D	d ₁	OZ	kg	Order Number	Stock
SK 40	ER25	3.0 - 16.0	88	26	42	57	± 1	-	PD60 40A 25 088	○
SK 50	ER25	3.0 - 16.0	88	26	42	57	± 1	-	PD60 50A 25 088	○

MAS-BT JIS 6339-AD

Size	Type	Ø-Range	L	l ₁	D	d ₁	OZ	kg	Order Number	Stock
BT 30	ER20	3.0 - 13.0	70	-	35	-	± 1	-	PT60 30A 20 070	○
BT 40	ER25	3.0 - 16.0	78	26	42	57	± 1	-	PT60 40A 25 078	○
BT 50	ER25	3.0 - 16.0	88	26	42	57	± 1	-	PT60 50A 25 088	○



Mandrino Flottante per Torni

Floating Chuck for Lathes



Cylindrical Shaft DIN 1835-A

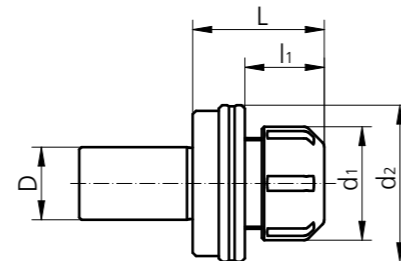
Size	Type	Ø-Range	L	l ₁	D	d ₁	d ₂	OZ	kg	Order Number	Stock
ZS 16	ER16	3.0 - 10.0	44	22	16	28	42	± 1	0.3	PZ60 16 16 044	●
ZS 20	ER16	3.0 - 10.0	44	22	20	28	42	± 1	0.3	PZ60 16 20 044	●

Il dado di bloccaggio per il disco per tenuta stagna, è incluso nella fornitura
Scope of delivery: Collet nut for seal disk included

Pinze e rondelle pagina 22
Collets and seal disc page 22

ZS Attacco cilindrico
Cylindrical shank

OZ Range Oscillazione
Floating range



● A magazzino On stock
▲ Disponibilità in breve periodo Short-term availability
○ Disponibilità su richiesta Availability on request

Tutte le dimensioni in mm
All dimensions in mm

Ø 7.600 – 13.100 mm

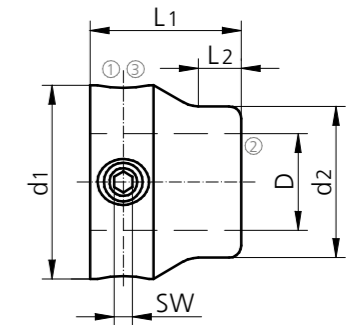


Boccola di Compensazione

Compensation Sleeve

System Size	L1	L2	D	d1	d2	SW	Order Number	Stock
RXs 08	16	3	6	20	16	2.5	MHs08/10 06 20 016	●
RXs 10	16	3	6	20	16	2.5	MHs08/10 06 20 016	●
RXs 11	18	4	8	22	16	2.5	MHs11/13 08 22 018	●
RXs 13	18	4	8	22	16	2.5	MHs11/13 08 22 018	●

▲ Non adatto per portainseriti in metallo duro
Not applicable for carbide insert holders



Parti di Ricambio

Spare Parts

System Size	①	②	③
RXs 08	C00 96 32	D00 05 00	G00 02 03
RXs 10	C00 96 32	D00 05 00	G00 02 03
RXs 11	C00 96 32	D00 05 01	G00 02 03
RXs 13	C00 96 32	D00 05 01	G00 02 03

● A magazzino On stock
▲ Disponibilità in breve periodo Short-term availability
○ Disponibilità su richiesta Availability on request

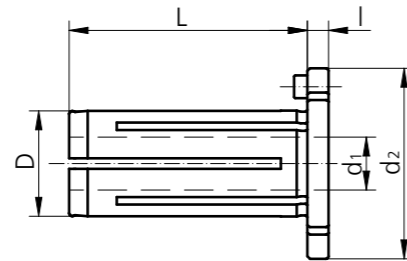
Tutte le dimensioni in mm
All dimensions in mm

Accessori

Accessories

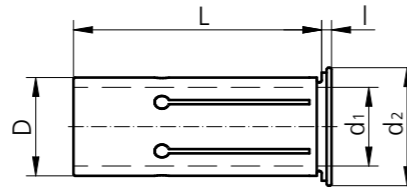
Riduttori per Mandrini Idraulici a Compensazione
Reducers for Hydro-Compensation Chuck

D	d ₁	L	l	d ₂	Order Number	Stock
12	6	49	4	26	67 12 06	●
12	8	49	4	26	67 12 08	●



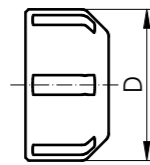
Riduttori per Mandrini Idraulici a Compensazione «Schunk»
Reducers for Hydro-Compensation Chuck "Schunk"

D	d ₁	L	l	d ₂	Order Number	Stock
12	6	45	2	16.5	0207913	●
12	8	45	2	16.5	0207915	●
20	6	50.5	2	24.0	0207923	●
20	8	50.5	2	24.0	0207925	●



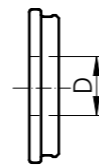
Dado di Bloccaggio
Collet Nut for Seal Disk

Type	D	Thread	Order Number	Stock
ER16	28	M22 x 1.5	20.107.210	●
ER20	34	M25 x 1.5	20.107.310	●
ER25	42	M32 x 1.5	20.107.410	●
ER32	50	M40 x 1.5	20.107.510	●



Rondella per Tenuta Stagna
Seal Disc for Collet Nut

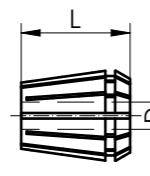
Type	D	Order Number	Stock
ER16	3.0 - 10.0	20.107.21XXX	●
ER20	3.0 - 13.0	20.107.31XXX	●
ER25	3.0 - 16.0	20.107.41XXX	●
ER32	3.0 - 20.0	20.107.51XXX	●



XXX = ø D Ø insert holders
Example: D = 12 = 20.107.41120

Pinze
Collets

Type	D	L	Order Number	Stock
ER16	3.0 - 10.0	27.5	62 16 XX	●
ER20	3.0 - 13.0	31.5	62 20 XX	●
ER25	3.0 - 16.0	35	62 25 XX	●
ER32	3.0 - 20.0	40	62 32 XX	●



XX = ø D Example: D = 12 = 62 25 12

Chiave per Serraggio Dadi
Key for Collet Nut

Type	Order Number	Stock
ER16	00 05 13	●
ER20	00 05 12	●
ER25	00 05 05	●
ER32	00 05 02	●



- A magazzino On stock
- ▲ Disponibilità in breve periodo Short-term availability
- Disponibilità su richiesta Availability on request

Tutte le dimensioni in mm
All dimensions in mm

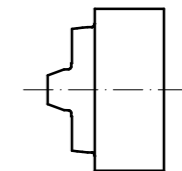
Accessori

Accessories



Inserto Indicatore di Run-Out
Run-Out Indicating Insert

System Size	Order Number	Stock
RXs 08	RXsC08 06 02	●
RXs 10	RXsC10 06 02	●
RXs 11	RXsC11 06 03	●
RXs 13	RXsC13 06 03	●



Chiave Torsiometrica Torx®
Torx®-Torque Wrench

System Size	Clamping Torque	Torx® Size	Order Number	Stock
RXs 08	0.6 Nm	T6	G00 40 15	●
RXs 10	0.9 Nm	T7	G00 40 14	●
RXs 11	1.4 Nm	T9	G00 40 16	●
RXs 13	2.0 Nm	T10	G00 40 17	●



▲ Vite di serraggio solo con chiave Torx®
Tightening screw with torque wrench only

- A magazzino On stock
- ▲ Disponibilità in breve periodo Short-term availability
- Disponibilità su richiesta Availability on request

Tutte le dimensioni in mm
All dimensions in mm

Accessori

Accessories

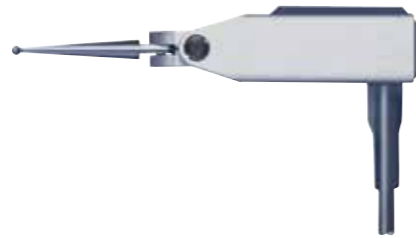
Dispositivo di Misurazione

Measuring Device

Type	Description	Order Number	Stock
Twin T10	Dispositivo di misurazione elettronico, batterie incl. Electronic measuring instrument, batteries incl.	04430013	○
LRC 6, AA	Batterie (3 pz.) Batteries (3 piece)	04768002	○
GT 31	Tastatore Lever probe	03210802	○
MGA	Supporto magnetico con braccio articolato Magnetic articulated arm	01639022	○



Twin T10



GT 31



MGA

● A magazzino
On stock

▲ Disponibilità in breve periodo
Short-term availability

○ Disponibilità su richiesta
Availability on request

Tutte le dimensioni in mm
All dimensions in mm

URMA Reaming
RX medium

Ø 11.900 – 35.600 mm
Ø 35.601 – 140.600 mm

Ø 11.900 – 35.600 mm
Ø 35.601 – 140.600 mm

URMA Reaming RX medium

Ø 11.900 – 35.600 mm	Pages 38 – 43	Page 59	Page 59	Pages 35 – 37	Page 30
Ø 35.601 – 140.600 mm	Pages 54 – 57	Page 53	Page 52	Page 51	Pages 46 – 47
		 optional	 optional		
Ø 35.601 – 140.600 mm	Pages 48 – 49				

Ø 11.900 – 35.600 mm

Inserti

Inserts

Inserti a scanalature dritte (RXG)

Straight Fluted Inserts (RXG)

System Size	Ø-Range	B	z	MB	VE	Order Number	Stock
RX 016	11.900 - 15.600	4.3	6	3	4	RXG...	▲
RX 019	15.601 - 18.600	4.3	6	3	4	Order example	▲
RX 024	18.601 - 23.600	4.3	6	3	4	page 33	▲
RX 029	23.601 - 28.600	4.3	8	3	2		▲
RX 036	28.601 - 35.600	4.3	8	3	1		▲

Inserti a scanalature dritte «SD» (RXG)

Straight Fluted Inserts "SD" (RXG)

System Size	Ø-Range	B	z	MB	VE	Order Number	Stock
RX 016	11.900 - 15.600	4.3	6	3	4	RXG... ..H	▲
RX 019	15.601 - 18.600	4.3	6	3	4	Order example p. 33	▲

⚠ Può essere utilizzato solo con il portainseri versione «SD» con vite centrale di serraggio
Can only be used with insert holder version "SD" with central clamping screw

Inserti Scanalati Elicoidali Sinistri (RXL)

Left Helical Fluted Inserts (RXL)

System Size	Ø-Range	B	z	MB	VE	Order Number	Stock
RX 016	11.900 - 15.600	4.3	6	3	4	RXL...	▲
RX 019	15.601 - 18.600	4.3	6	3	4	Order example	▲
RX 024	18.601 - 23.600	4.3	6	3	4	page 33	▲
RX 029	23.601 - 28.600	4.3	8	3	2		▲
RX 036	28.601 - 35.600	4.3	8	3	1		▲

Inserti a scanalature elicoidali sinistre «SD» (RXL)

Left Helical Fluted Inserts "SD" (RXL)

System Size	Ø-Range	B	z	MB	VE	Order Number	Stock
RX 016	11.900 - 15.600	4.3	6	3	4	RXL... ..H	▲
RX 019	15.601 - 18.600	4.3	6	3	4	Order example p. 33	▲

⚠ Può essere utilizzato solo con il portainseri versione «SD» con vite centrale di serraggio
Can only be used with insert holder version "SD" with central clamping screw

z Ordine minimo
MB Numero di taglienti
VE quantità a confezione

z Number of teeth
MB Minimum order quantity
VE Packaging quantity

Ø 35.601 – 140.600 mm

Schneiden

Inserts

inserti Scanalati Dritti (RXG)

Straight Fluted Inserts (RXG)

System Size	Ø-Range	B	z	MB	VE	Order Number	Stock
RX 044	35.601 - 43.600	4.3	8	2	1	RXG...	▲
RX 052	43.601 - 51.600	4.3	10	2	1	Order example	▲
RX 061	51.601 - 60.600	4.3	10	2	1	page 33	▲
RX 081	60.601 - 80.600	4.3	12	2	1		▲
RX 101	80.601 - 100.600	4.3	12	2	1		▲
RX 121	100.601 - 120.600	5.3	12	2	1		▲
RX 141	120.601 - 140.600	5.3	12	2	1		▲

Inserti Scanalati Elicoidali Sinistri (RXL)

Left Helical Fluted Inserts (RXL)

System Size	Ø-Range	B	z	MB	VE	Order Number	Stock
RX 044	35.601 - 43.600	4.3	8	2	1	RXL...	▲
RX 052	43.601 - 51.600	4.3	10	2	1	Order example	▲
RX 061	51.601 - 60.600	4.3	10	2	1	page 33	▲
RX 081	60.601 - 80.600	4.3	12	2	1		▲
RX 101	80.601 - 100.600	4.3	12	2	1		▲
RX 121	100.601 - 120.600	5.3	12	2	1		▲
RX 141	120.601 - 140.600	5.3	12	2	1		▲

z Ordine minimo
MB Numero di taglienti
VE quantità a confezione

z Number of teeth
MB Minimum order quantity
VE Packaging quantity

● A magazzino
On stock

▲ Disponibilità in breve periodo
Short-term availability

○ Disponibilità su richiesta
Availability on request

Tutte le dimensioni in mm
All dimensions in mm

Come Selezionare la Misura dell'Inserto

Explanation of Insert Size

Per ordini con specifiche riguardo le tolleranze del foro, il diametro è definito dagli standard URMA. A seconda del range di tolleranza, il diametro finale sarà tra il 65% e l'80% della tolleranza complessiva.

Esempio Dicitura Inserto Standard

RXG42.2H7-A01U2 F0514R1
inserto rettificato Ø 42,220 mm

RXG18.2+20-10-A01U1 F0514R1H
inserto rettificato Ø 18,215 mm

L'inserto-Q è da selezionare qualora si desideri una dimensione specifica di inserto. Al contrario degli inserti standard, dove tutte le tolleranze sono riferite alla tolleranza del foro, negli inserti-Q è indicata la dimensione del diametro desiderato dell'inserto. Q-Cut è raccomandato nelle applicazioni speciali dove il range di tolleranza standard non è applicabile.

Esempio dicitura Inserto-Q

RXG20.020Q+3-3-A01U1 F0512R1
inserto rettificato Ø 20,020 mm

For orders with specifications of bore tolerance, the diameter is defined by URMA standard. Depending on tolerance range, the final diameter will be within 65% to 80% of the total tolerance.

Examples Standard Insert Designation

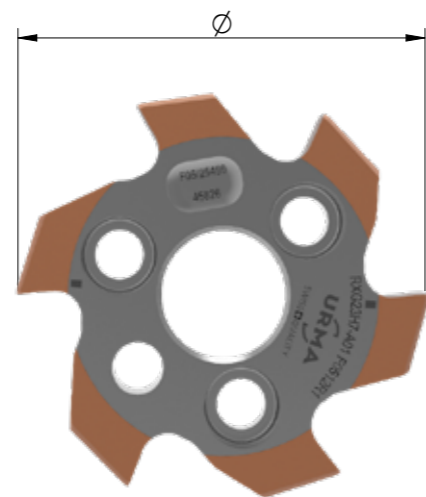
RXG42.2H7-A01U2 F0514R1
insert size on Ø 42,220 mm

RXG18.2+20-10-A01U1 F0514R1H
insert size on Ø 18,215 mm

A Q-insert designation is to be selected for any specific insert dimension. Opposed to standard inserts where all tolerances refer to the bore tolerance, Q-inserts indicate the required insert diameter (target size). Q-inserts are recommended for special applications where standard tolerance ranges are not applicable.

Example Q-Insert Designation

RXG20.020Q+3-3-A01U1 F0512R1
insert size on Ø 20,020 mm



Come Ordinare

Order Example

	Diametro del foro Bore diameter	Tolleranza ISO ISO bore tolerances	Tolleranza fori in µm Bore tolerance in µm	Diametro inserto Insert diameter	Dimensione obiettivo (Inserto-Q) Target size (Q-Insert)
Example	Come ordinare Order example RXG42.2 H7 -A01 U2 F0514R1		Come ordinare Order example RXG18.2+ 20-10 -A01 U1 F0514R1 H	Come ordinare Order example RXG 20.020Q + 3-3 -A01 U1 F0512R1	Example
	RX Classificazione sistema RX medium RX medium system designation		RX Classificazione sistema RX medium RX medium system designation	RX Classificazione sistema RX medium RX medium system designation	
	G Forma scanatura (G = dritta; L = elicoidali sinistri) Flute form (G = straight; L = left-hand helix)		G Forma scanatura (G = dritta; L = elicoidali sinistri) Flute form (G = straight; L = left-hand helix)	G Forma scanatura (G = dritta; L = elicoidali sinistri) Flute form (G = straight; L = left-hand helix)	
Diameter	42.2 Diametro (mm) Diameter (mm)		18.2 Diametro (mm) Diameter (mm)	20.020 Diametro inserto (mm) Insert diameter (mm)	Diameter
	H7 Tolleranza standard ISO Tolerance in ISO standard		+20-10 Tolleranza fori (µm) Bore tolerance (µm)	Q Codice per la dimensione dell'inserto Code for target size insert	
	A01 Geometria tagliente Cutting geometry		A01 Geometria tagliente Cutting geometry	+3-3 Tolleranza di produzione (µm) Manufacturing tolerance (µm)	
Option	U2 Preparazione bordo Per i dettagli, guarda "Technology Guide" Edge preparation For details see "Reaming Technology Guide"		U1 Preparazione bordo Per i dettagli, guarda "Technology Guide" Edge preparation For details see "Reaming Technology Guide"	A01 Geometria tagliente Cutting geometry	Option
	F05 Materiale di taglio Per i dettagli, guarda "Technology Guide" Cutting material For details see "Reaming Technology Guide"		F05 Materiale di taglio Per i dettagli, guarda "Technology Guide" Cutting material For details see "Reaming Technology Guide"	U1 Preparazione bordo Per i dettagli, guarda "Technology Guide" Edge preparation For details see "Reaming Technology Guide"	
	14R Rivestimento Per i dettagli, guarda "Technology Guide" Coating For details see "Reaming Technology Guide"		14R Rivestimento Per i dettagli, guarda "Technology Guide" Coating For details see "Reaming Technology Guide"	F05 Materiale di taglio Per i dettagli, guarda "Technology Guide" Cutting material For details see "Reaming Technology Guide"	
	1 1 = rivestimento sottile 1 = thin coating 2 = rivestimento spesso 2 = thick coating		1 1 = rivestimento sottile 1 = thin coating 2 = rivestimento spesso 2 = thick coating	14R Rivestimento Per i dettagli, guarda "Technology Guide" Coating For details see "Reaming Technology Guide"	
Option	H* H= SD vuoto (senza H = spazio regolare) H = SD blank (without H = regular blank)		H* H= SD vuoto (senza H = spazio regolare) H = SD blank (without H = regular blank)	1 1 = rivestimento sottile 1 = thin coating 2 = rivestimento spesso 2 = thick coating	Option
				H* H= SD vuoto (senza H = spazio regolare) H = SD blank (without H = regular blank)	

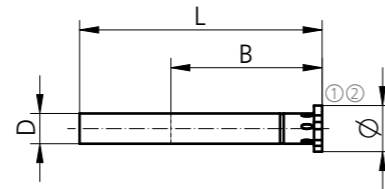
* SD blank «H» solo per RX016 e RX019 vedi catalogo «URMA Reaming» a pagina 30
* SD blank "H" only for RX016 and RX019 see "URMA Reaming" catalogue on page 30

Ø 11.900 – 35.600 mm



Porta Inserti

Insert Holders



Versione corta (acciaio)

Short Version (Steel)



System Size	Ø-Range	L	B	D _{h6}	kg	Order Number "D"	Order Number "B"	Stock
RX 016	11.900 - 15.600	100	60	10	0.06	RXD16 10 100	RXB16 10 100	●
RX 019	15.601 - 18.600	115	70	12	0.1	RXD19 12 115	RXB19 12 115	●
RX 024	18.601 - 23.600	128	80	16	0.2	RXD24 16 128	RXB24 16 128	●
RX 029	23.601 - 28.600	145	95	20	0.35	RXD29 20 145	RXB29 20 145	●
RX 036	28.601 - 35.600	170	110	25	0.65	RXD36 25 170	RXB36 25 170	●

Versione lunga (acciaio)

Long Version (Steel)



System Size	Ø-Range	L	B	D _{h6}	kg	Order Number "D"	Order Number "B"	Stock
RX 016	11.900 - 15.600	160	120	10	0.1	RXD16 10 160	RXB16 10 160	●
RX 019	15.601 - 18.600	185	140	12	0.15	RXD19 12 185	RXB19 12 185	●
RX 024	18.601 - 23.600	208	160	16	0.3	RXD24 16 208	RXB24 16 208	●
RX 029	23.601 - 28.600	240	190	20	0.55	RXD29 20 240	RXB29 20 240	●
RX 036	28.601 - 35.600	274	214	25	1	RXD36 25 274	RXB36 25 274	●

Versione lunga (carburo)

Long Version (Carbide)



System Size	Ø-Range	L	b	D _{h6}	kg	Order Number "D"	Order Number "B"	Stock
RX 016	11.900 - 15.600	160	120	10	0.2	RXD16 10 160HM	RXB16 10 160HM	●
RX 019	15.601 - 18.600	185	140	12	0.3	RXD19 12 185HM	RXB19 12 185HM	●
RX 024	18.601 - 23.600	208	160	16	0.6	RXD24 16 208HM	RXB24 16 208HM	●
RX 029	23.601 - 28.600	240	190	20	1.1	RXD29 20 240HM	RXB29 20 240HM	●
RX 036	28.601 - 35.600	274	214	25	1.9	RXD36 25 274HM	RXB36 25 274HM	●

Incluso nella fornitura: 1 Set di viti di ricambio e 1 cacciavite Torx® (si consiglia un cacciavite dinamometrico, pagina 62) vedere pagina 38 per il mandrino a compensazione

Scope of delivery: 1 Set of replacement screws and 1 Torx® screw driver

(torque screw driver is recommended, page 62) see page 38 for compensation holder

Parti di Ricambio

Spare Parts

System Size	①	②
RX 016	C00 90 00 (3x)	G00 20 01
RX 019	C00 90 00 (3x)	G00 20 01
RX 024	C00 90 01 (3x)	G00 20 02
RX 029	C00 90 01 (4x)	G00 20 02
RX 036	C00 90 01 (4x)	G00 20 02

RXD = Foro Passante

RXB = Foro Cieco

HM = Con gambi in metallo duro

RXD = Through bore

RXB = Blind bore

HM = with carbide shanks

Tutte le barre portainseri possono essere accorciate alla lunghezza ottimale su richiesta (a pagamento)

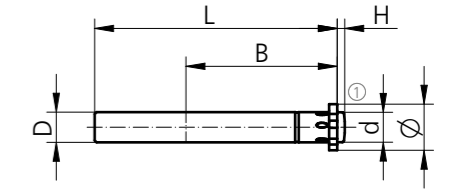
All insert holders can be shortened to the optimal length on request (for surcharge)

Ø 11.900 – 35.600 mm



Porta Inserto con Vite Centrale di Serraggio «SD»

Insert Holder with a Central Clamping Screw "SD"



Versione corta (acciaio) con vite di bloccaggio centrale «SD»

Short Version (Steel) with a Central Clamping Screw "SD"



System Size	Ø-Range	L	B	D _{h6}	d	H	Order Number "D"	Order Number "B"	Stock
RX 016	11.900-15.600	100	60	10	9.8	2.5	RXD16 10 100SD	RXB16 10 100SD	●
RX 019	15.601-18.600	115	70	12	11.8	3.0	RXD19 12 115SD	RXB19 12 115SD	●
RX 024	18.601-23.600	128	80	16	15.8	4.0	RXD24 16 128SD	RXB24 16 128SD	●
RX 029	23.601-28.600	145	95	20	15.8	4.0	RXD29 20 145SD	RXB29 20 145SD	●
RX 036	28.601-35.600	170	110	25	24.5	4.0	RXD36 25 170SD	RXB36 25 170SD	●

Versione lunga (acciaio) con vite di bloccaggio centrale «SD»

Long Version (Steel) with a Central Clamping Screw "SD"



System Size	Ø-Range	L	B	D _{h6}	d	H	Order Number "D"	Order Number "B"	Stock
RX 016	11.900-15.600	160	120	10	9.8	2.5	RXD16 10 160SD	RXB16 10 160SD	●
RX 019	15.601-18.600	185	140	12	11.8	3.0	RXD19 12 185SD	RXB19 12 185SD	●
RX 024	18.601-23.600	208	160	16	15.8	4.0	RXD24 16 208SD	RXB24 16 208SD	●
RX 029	23.601-28.600	240	190	20	15.8	4.0	RXD29 20 240SD	RXB29 20 240SD	●
RX 036	28.601-35.600	274	214	25	24.5	4.0	RXD36 25 274SD	RXB36 25 274SD	●

Versione lunga (carburo) con vite di bloccaggio centrale «SD»

Long Version (Carbide) with a Central Clamping Screw "SD"



System Size	Ø-Range	L	B	D _{h6}	d	H	Order Number "D"	Order Number "B"	Stock
RX 016	11.900-15.600	160	120	10	9.8	2.5	RXD16 10 160HMSD	RXB16 10 160HMSD	●
RX 019	15.601-18.600	185	140	12	11.8	3.0	RXD19 12 185HMSD	RXB19 12 185HMSD	●
RX 024	18.601-23.600	208	160	16	15.8	4.0	RXD24 16 208HMSD	RXB24 16 208HMSD	●
RX 029	23.601-28.600	240	190	20	15.8	4.0	RXD29 20 240HMSD	RXB29 20 240HMSD	●
RX 036	28.601-35.600	274	214	25	24.5	4.0	RXD36 25 274HMSD	RXB36 25 274HMSD	●

Incluso nella fornitura: 1 Set di viti di ricambio e 1 cacciavite Torx® (si consiglia un cacciavite dinamometrico, pagina 62) vedere pagina 38 per il mandrino a compensazione

Scope of delivery: 1 Torx® screw driver included

(torque screw driver is recommended, page 62) see page 38 for compensation holder

Parti di Ricambio

Spare Parts "D"

System Size	①
RX 016	C00 90 22
RX 019	C00 90 23
RX 024	C00 90 24
RX 029	C00 90 24
RX 036	C00 90 25

Parti di Ricambio

Spare Parts "B"

System Size	①
RX 016	C00 90 22
RX 019	C00 90 23B
RX 024	C00 90 24B
RX 029	C00 90 24B
RX 036	C00 90 25B

RXD = Foro Passante

RXB = Foro Cieco

HM = Con gambi in metallo duro

RXD = Through bore

RXB = Blind bore

HM = with carbide shanks

Tutte le barre portainseri possono essere accorciate alla lunghezza ottimale su richiesta (a pagamento)

All insert holders can be shortened to the optimal length on request (for surcharge)

Ø 11.900 – 35.600 mm

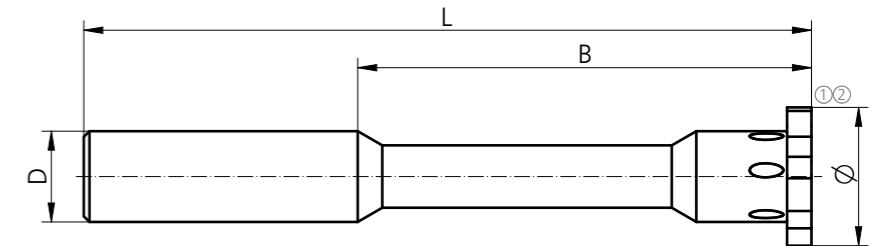


Porta Inserti (diametro ridotto)
Insert Holders (Diameter Reduced)



System Size	Ø-Range	L	B	D _{h6}	kg	Order Number "D"	Order Number "B"	Stock
RX 016	11.900 - 15.600	100	60	10	0.05	RXD16 10 100F	RXB16 10 100F	●
RX 019	15.601 - 18.600	115	70	12	0.08	RXD19 12 115F	RXB19 12 115F	●
RX 024	18.601 - 23.600	128	80	16	0.14	RXD24 16 128F	RXB24 16 128F	●
RX 029	23.601 - 28.600	145	95	20	0.25	RXD29 20 145F	RXB29 20 145F	●
RX 036	28.601 - 35.600	170	110	25	0.45	RXD36 25 170F	RXB36 25 170F	●

La versione SD è disponibile su richiesta
SD version available on request



Parti di Ricambio
Spare Parts

System Size	①	②
RX 016	C00 90 00 (3x)	G00 20 01
RX 019	C00 90 00 (3x)	G00 20 01
RX 024	C00 90 01 (3x)	G00 20 02
RX 029	C00 90 01 (4x)	G00 20 02
RX 036	C00 90 01 (4x)	G00 20 02

● A magazzino (On stock) ▲ Disponibilità in breve periodo (Short-term availability) ○ Disponibilità su richiesta (Availability on request)

Tutte le dimensioni in mm
All dimensions in mm

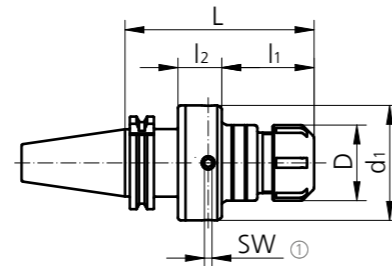
Ø 11.900 – 35.600 mm



Mandrino a compensazione con pinze di serraggio
Compensation Collet Chuck

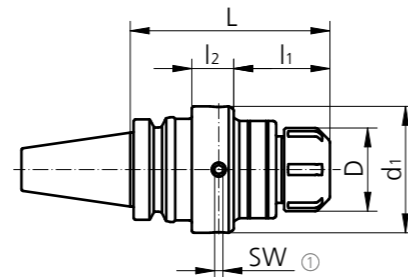
DIN 69871-AD

Size	Type	Ø-Range	L	l ₁	l ₂	D	d ₁	SW	kg	Order Number	Stock
SK 40	ER32	3.0 - 20.0	120	56	29	50	76	5	2.2	AND60 40A 32 120	●
SK 40	ER40	3.0 - 30.0	135	68	32	63	76	5	2.2	AND60 40A 40 135	●
SK 50	ER32	3.0 - 20.0	120	61	24	50	76	5	4.1	AND60 50A 32 120	●
SK 50	ER40	3.0 - 30.0	135	76	24	63	76	5	4.2	AND60 50A 40 135	●



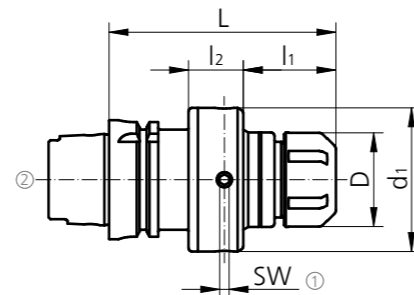
MAS-BT JIS 6339-AD

Size	Type	Ø-Range	L	l ₁	l ₂	D	d ₁	SW	kg	Order Number	Stock
BT 40	ER32	3.0 - 20.0	120	54	29	50	76	5	2.2	ANT60 40A 32 120	●
BT 40	ER40	3.0 - 30.0	135	66	32	63	75	5	2.3	ANT60 40A 40 135	●
BT 50	ER32	3.0 - 20.0	120	58	24	50	76	5	4.5	ANT60 50A 32 120	●
BT 50	ER40	3.0 - 30.0	135	73	24	63	76	5	4.5	ANT60 50A 40 135	●



DIN 69893-HSK-A

Size	Type	Ø-Range	L	l ₁	l ₂	D	d ₁	SW	kg	Order Number	Stock
HSK 63	ER32	3.0 - 20.0	120	49	29	50	76	5	2	ANH60 63A 32 120	●
HSK 63	ER40	3.0 - 30.0	135	64	29	63	76	5	1.9	ANH60 63A 40 135	●
HSK 100	ER32	3.0 - 20.0	120	67	24	50	76	5	3.4	ANH60 100A 32 120	●
HSK 100	ER40	3.0 - 30.0	135	82	24	63	76	5	3.3	ANH60 100A 40 135	●



Incluso nella fornitura: Dado di bloccaggio per tenuta stagna e tubo per liquidi refrigeranti

Scope of delivery: Collet nut for seal disk and coolant tube included

Pinze e rondelle pagina 59

Collets and seal disc page 59

Parti di Ricambio
Spare Parts

Size	Order Number	Stock
12	C00 03 44	●
20	C00 03 44	●
32	C00 03 45	●

Tubo per Refrigerante
Coolant Tube

Size	Order Number	Stock
63	H00 63 01	○
100	H00 100 01	○

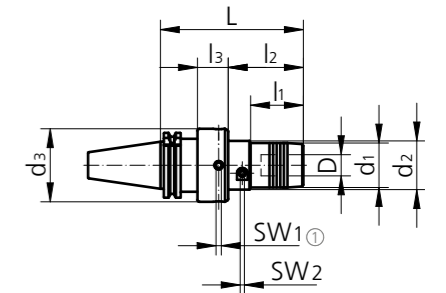
Ø 11.900 – 35.600 mm



Mandrino Idraulico Espandibile
Compensation Hydro Chuck

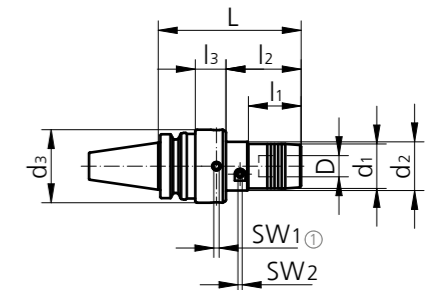
DIN 69871-AD

Size	L	l ₁	l ₂	l ₃	D	d ₁	d ₂	d ₃	SW ₁	SW ₂	kg	Order Number	Stock
SK 40	135	50	71	29	20	42	46	69	5	4	2.5	AND65 40A 20 135	○
SK 40	180	111	-	34	32	62	-	88	6	6	3.8	AND65 40A 32 180	○
SK 50	160	70	92	34	20	42	46	69	5	4	5	AND65 50A 20 160	○
SK 50	180	111	-	34	32	62	-	88	6	6	6.4	AND65 50A 32 180	○



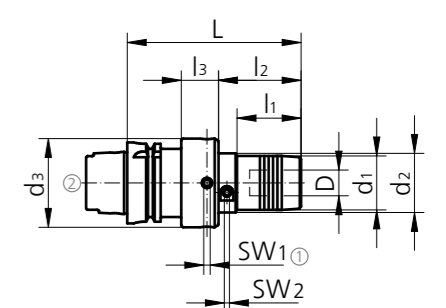
MAS-BT JIS 6339-AD

Size	L	l ₁	l ₂	l ₃	D	d ₁	d ₂	d ₃	SW ₁	SW ₂	kg	Order Number	Stock
BT 40	135	50	71	29	20	42	46	69	5	4	2.5	ANT65 40A 20 135	○
BT 40	180	111	-	34	32	62	-	88	6	6	3.9	ANT65 40A 32 180	○
BT 50	135	50	73	24	20	42	46	69	5	4	4.8	ANT65 50A 20 135	○
BT 50	180	116	-	26	32	62	-	88	6	6	6.5	ANT65 50A 32 180	○



DIN 69893-HSK-A

Size	L	l ₁	l ₂	l ₃	D	d ₁	d ₂	d ₃	SW ₁	SW ₂	kg	Order Number	Stock
HSK 63	135	50	64	29	20	42	46	69	5	4	2.2	ANH65 63A 20 135	○
HSK 63	180	104	-	34	32	62	-	88	6	6	4.2	ANH65 63A 32 180	○
HSK 100	135	50	82	24	20	42	46	69	5	4	3.4	ANH65 100A 20 135	○
HSK 100	165	110	-	26	32	62	-	88	6	6	4.9	ANH65 100A 32 165	○



Incluso nella fornitura: Dado di bloccaggio per tenuta stagna e tubo per liquidi refrigeranti

Scope of delivery: Coolant tube included

Parti di Ricambio
Spare Parts

D	Order Number	Stock
12	C00 03 44	●
20	C00 03 44	●
32	C00 03 45	●

Tubo per Refrigerante
Coolant Tube

Size	Order Number	Stock
63	H00 63 01	○
100	H00 100 01	○

● A magazzino
On stock

▲ Disponibilità in breve periodo
Short-term availability

○ Disponibilità su richiesta
Availability on request

Tutte le dimensioni in mm
All dimensions in mm

Ø 11.900 – 35.600 mm

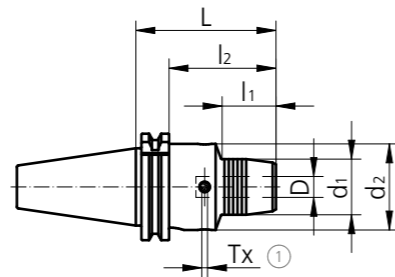


Mandrino Idraulico Espandibile SCHUNK «Tendo Zero»

Schunk "Tendo Zero" Compensation Hydro Chuck

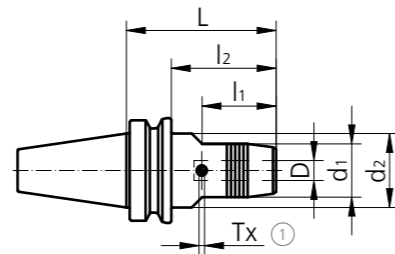
DIN 69871-AD/B

Size	L	l ₁	l ₂	D	d ₁	d ₂	Tx	kg	Schunk Order Number	Stock
SK 40	81	34	62	20	42	50	T15	1.4	204266 Z	▲
SK 40	81	26	62	32	63	80	T15	2	204267 Z	▲
SK 50	81	34	62	20	42	50	T15	3.3	204246 Z	▲
SK 50	104	63	84	32	64	70	T15	4.4	204247 Z	○



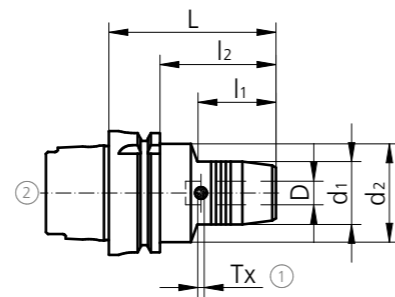
MAS-BT JIS 6339-AD/B

Size	L	l ₁	l ₂	D	d ₁	d ₂	Tx	kg	Schunk Order Number	Stock
BT 30	90	48	63	20	42	45	T15	1.5	205636 Z	▲
BT 40	90	48	63	20	42	45	T15	1.5	204445 Z	▲
BT 50	90	34	52	20	42	45	T15	4	204457 Z	▲
BT 50	120	63	82	32	64	70	T15	5.3	204458 Z	▲



DIN 69893-HSK-A

Size	L	l ₁	l ₂	D	d ₁	d ₂	Tx	kg	Schunk Order Number	Stock
HSK 63	90	48	64	20	42	50	T15	1.3	204056 Z*	▲
HSK 63	120	59	94	25	57	63	T15	2.2	204057 Z*	▲
HSK 63	125	63	99	32	64	75	T15	2.7	204058 Z*	▲
HSK 100	105	59	76	20	42	50	T15	2.8	204066 Z*	▲
HSK 100	110	62	81	25	57	63	T15	2.8	204067 Z*	▲
HSK 100	110	62	81	32	64	75	T15	3.8	204068 Z*	▲



* Tubo per liquidi di raffreddamento non incluso.

Riduttori a pagina 59.

* Coolant tube is not included.

per altre informazioni www.schunk.com

Reducers are on page 59.

For further dimensions see www.schunk.com

Parti di Ricambio

Spare Parts

Size	Image
63	
100	

Tubo per Refrigerante

Coolant Tube

Size	Image
63	
100	

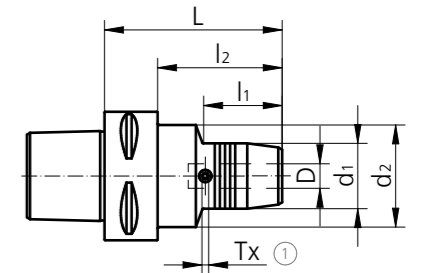
- A magazzino On stock
- ▲ Disponibilità in breve periodo Short-term availability
- Disponibilità su richiesta Availability on request

Tutte le dimensioni in mm
All dimensions in mm

Ø 11.900 – 35.600 mm

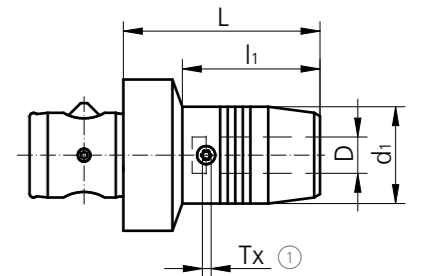
ISO 26623-1-PSC

Size	L	l ₁	l ₂	D	d ₁	d ₂	Tx	kg	Schunk Order Number	Stock
PSC 50	90	52	-	20	42	50	T15	1.05	201846 Z	▲
PSC 63	97	55	-	20	42	63	T15	1.6	201856 Z	▲
PSC 63	110	62	-	32	63	63	T15	2.8	201858 Z	▲



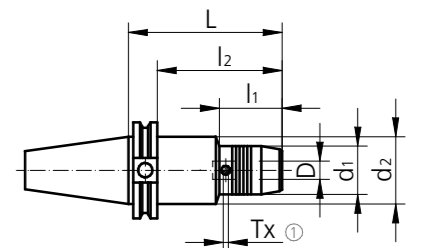
ABS-H

Size	L	l ₁	D	d ₁	Tx	kg	Schunk Order Number	Stock
ABS 50	75	58	20	42	T15	0.9	204576 Z	▲



ASME B5.50-CAT-AD/B

Size	L	l ₁	l ₂	D	d ₁	d ₂	Tx	kg	Schunk Order Number	Stock
CAT 40	102	50	83	20	38	45	T15	2	203666 Z	○
CAT 50	102	50	83	20	42	70	T15	2.8	204666 Z	○
CAT 50	102	65	83	32	64	70	T15	4.1	204668 Z	○



Riduttori a pagina 59.

per altre informazioni www.schunk.com

Reducers are on page 59.

For further dimensions see www.schunk.com

Parti di Ricambio

Spare Parts

Size	Image
63	
100	

- A magazzino On stock
- ▲ Disponibilità in breve periodo Short-term availability
- Disponibilità su richiesta Availability on request

Tutte le dimensioni in mm
All dimensions in mm

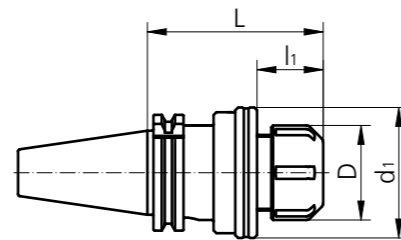
Ø 11.900 – 35.600 mm



Mandrino Flottante
Floating Chuck

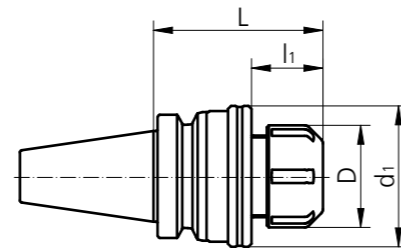
DIN 69871-AD

Size	Type	Ø-Range	L	l ₁	D	d ₁	OZ	kg	Order Number	Stock
SK 40	ER25	3.0 - 16.0	88	26	42	57	± 1	-	PD60 40A 25 088	○
SK 40	ER32	3.0 - 20.0	93	27	50	69	± 1	-	PD60 40A 32 093	○
SK 40	ER40	3.0 - 26.0	99	33	63	79	± 1	-	PD60 40A 40 099	○
SK 50	ER25	3.0 - 16.0	88	26	42	57	± 1	-	PD60 50A 25 088	○
SK 50	ER32	2.0 - 20.0	93	27	50	69	± 1	-	PD60 50A 32 093	○
SK 50	ER40	3.0 - 26.0	99	33	63	79	± 1	-	PD60 50A 40 099	○



MAS-BT JIS 6339-AD

Size	Type	Ø-Range	L	l ₁	D	d ₁	OZ	kg	Order Number	Stock
BT 30	ER20	3.0 - 13.0	70	-	35	-	± 1	-	PT60 30A 20 070	○
BT 40	ER25	3.0 - 16.0	78	26	42	57	± 1	-	PT60 40A 25 078	○
BT 40	ER32	3.0 - 20.0	83	27	50	69	± 1	-	PT60 40A 32 083	○
BT 40	ER40	3.0 - 30.0	89	33	63	79	± 1	-	PT60 40A 40 089	○
BT 50	ER25	3.0 - 16.0	88	26	42	57	± 1	-	PT60 50A 25 088	○
BT 50	ER32	3.0 - 20.0	93	27	50	69	± 1	-	PT60 50A 32 093	○
BT 50	ER40	3.0 - 26.0	99	33	63	79	± 1	-	PT60 50A 40 099	○



Incluso nella fornitura: Controdado per disco di tenuta

Scope of delivery: Collet nosepiece for seal disk included

Pinze e rondelle pagina 59

Collets and seal disc page 59

OZ Range Oscillazione

Floating range

● A magazzino
On stock

▲ Disponibilità in breve periodo
Short-term availability

○ Disponibilità su richiesta
Availability on request

Tutte le dimensioni in mm
All dimensions in mm

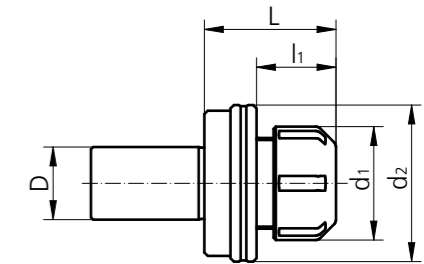
Ø 11.900 – 35.600 mm



Mandrino Flottante per Tornio
Floating Chuck for Lathes

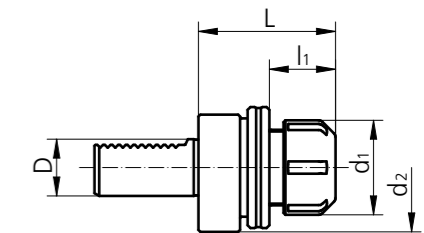
Cylindrical shaft DIN 1835-A

Adaptors	Type	Ø-Range	L	l ₁	D	d ₁	d ₂	OZ	kg	Order Number	Stock
ZS 20	ER25	3.0 - 16.0	53	26	20	42	57	± 1	0.6	PZ60 25 20 053	●
ZS 25	ER32	3.0 - 20.0	58	27	25	50	69	± 1.5	1.0	PZ60 32 25 058	●
ZS 25	ER40	3.0 - 26.0	64	33	25	63	79	± 1.5	1.4	PZ60 40 25 064	●
ZS 32	ER32	3.0 - 20.0	58	27	32	50	69	± 1.5	1.1	PZ60 32 32 058	●
ZS 32	ER40	3.0 - 26.0	64	33	32	63	79	± 1.5	1.5	PZ60 40 32 064	●



DIN 69880-VDI

Adaptors	Type	Ø-Range	L	l ₁	D	d ₁	d ₂	OZ	kg	Order Number	Stock
VDI 20	ER25	3.0 - 16.0	57	26	20	42	57	± 1	-	PV60 25 20 057	▲
VDI 30	ER25	3.0 - 16.0	64	26	30	42	68	± 1	-	PV60 25 30 064	▲
VDI 30	ER32	3.0 - 20.0	72	27	30	50	68	± 1.5	-	PV60 32 30 072	▲
VDI 40	ER32	3.0 - 20.0	74	27	40	50	83	± 1.5	1.9	PV60 32 40 074	▲
VDI 40	ER40	3.0 - 26.0	74	33	40	63	83	± 1.5	-	PV60 40 40 074	▲



Incluso nella fornitura: Controdado per disco di tenuta

Scope of delivery: Collet nosepiece for seal disk included

Altre dimensioni su richiesta

Other dimensions on request

Pinze e rondelle pagina 59

Collets and seal disc page 59

ZS Attacco cilindrico

Cylindrical shank

OZ Range Oscillazione

Floating range

● A magazzino
On stock

▲ Disponibilità in breve periodo
Short-term availability

○ Disponibilità su richiesta
Availability on request

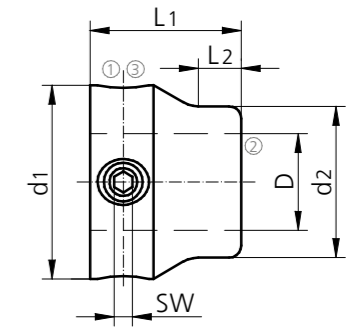
Tutte le dimensioni in mm
All dimensions in mm



Boccola di Compensazione

Compensation Sleeve

System Size	L1	L2	D	d1	d2	SW	Order Number	Stock
RX 016	20	5	10	26	20	3	MH16 10 26 020	●
RX 019	20	5	12	28	22	3	MH19 12 28 020	●
RX 024	25	7	16	32	25	3	MH24 16 32 025	●
RX 029	32	10	20	40	32	4	MH29 20 40 032	●
RX 036	35	13	25	45	38	4	MH36 25 45 035	●



Non adatto per portainseri in metallo duro
Not applicable for carbide insert holders

Parti di Ricambio

Spare Parts

System Size	①	②	③
RX 016	C00 96 29	D00 05 03	G00 02 04
RX 019	C00 96 29	D00 05 04	G00 02 04
RX 024	C00 96 29	D00 05 02	G00 02 04
RX 029	C00 96 31	D00 05 05	G00 02 05
RX 036	C00 96 31	D00 05 06	G00 02 05

● A magazzino
On stock

▲ Disponibilità in breve periodo
Short-term availability

○ Disponibilità su richiesta
Availability on request

Tutte le dimensioni in mm
All dimensions in mm

Ø 35.601 – 140.600 mm



Porta Inserti

Insert Holders



System Size	Ø-Range	L	D	d	kg	Order Number "G"	Order Number "B"	Stock
RX 044	35.601 - 43.600	30	32	18	0.3	RXKG44 32 18 030	RXKB44 32 18 030	●
RX 052	43.601 - 51.600	35	39	20	0.45	RXKG52 39 20 035	RXKB52 39 20 035	●
RX 061	51.601 - 60.600	40	46	25	0.7	RXKG61 46 25 040	RXKB61 46 25 040	●
RX 081	60.601 - 80.600	50	56	32	1.25	RXKG81 56 32 050	RXKB81 56 32 050	●
RX 101	80.601 - 100.600	60	76	40	2.6	RXKG101 76 40 060	RXKB101 76 40 060	●
RX 121	100.601 - 120.600	60	76	40	3.25	RXKG121 76 40 060	RXKB121 76 40 060	●
RX 141	120.601 - 140.600	60	76	40	3.9	RXKG141 76 40 060	RXKB141 76 40 060	●

Attenzione: utilizzare la vite di tipo 35 per la versione RXKG, 38 per la versione RXKB
 Attention: Use the screw type 35 for the version RXKG, 38 for the version RXKB

Incluso nella fornitura: 1 set di viti e 1 Chiave torsiometrica Torx® (la chiave torque è raccomandata, a pag. 62)

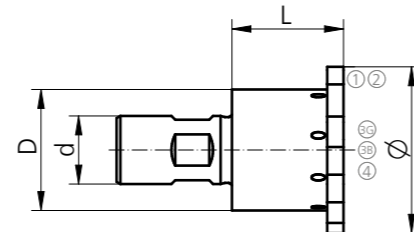
Scope of delivery: 1 Set of replacement screws and 1 Torx® screw driver (torque screw driver is recommended, page 62)

Assemblaggio e Manutenzione, «URMA Reaming Technology Guide»

See "URMA Reaming Technology Guide" for details on assembly and handling

RXKG = per fori passanti
 RXKB = per fori ciechi

RXKG = for through bores
 RXKB = for blind holes



Parti di Ricambio

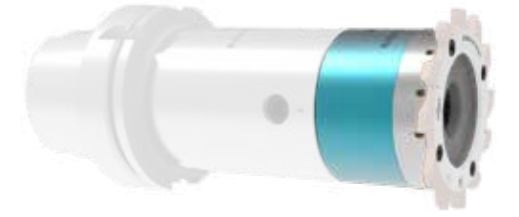
Spare Parts

System Size	1	2	35	38	4
RX 044	C00 90 02 (4x)	G00 20 02	C00 26 23	C00 26 23B	G00 02 07
RX 052	C00 90 02 (5x)	G00 20 02	C00 26 38	C00 26 38B	G00 02 07
RX 061	C00 90 02 (5x)	G00 20 02	C00 24 26	C00 24 26B	G00 02 08
RX 081	C00 90 04 (4x)	G00 20 03	C00 26 37	C00 26 37B	G00 02 09
RX 101	C00 90 04 (4x)	G00 20 03	C00 24 31	C00 24 31B	G00 02 16
RX 121	C00 90 04 (8x)	G00 20 03	C00 24 31	C00 24 31B	G00 02 16
RX 141	C00 90 04 (8x)	G00 20 03	C00 24 31	C00 24 31B	G00 02 16

● A magazzino On stock ▲ Disponibilità in breve periodo Short-term availability ○ Disponibilità su richiesta Availability on request

Tutte le dimensioni in mm All dimensions in mm

Ø 60.601 – 140.600 mm



Porta Inserti (Peso Ridotto)

Insert Holders (Lightweight)



System Size	Ø-Range	L	D	d	kg	Order Number "G"	Order Number "B"	Stock
RX 081	60.601 - 80.600	50	56	32	0.9	RXKGL81 56 32 050	RXKBL81 56 32 050	●
RX 101	80.601 - 100.600	60	76	40	1.8	RXKGL101 76 40 060	RXKBL101 76 40 060	●
RX 121	100.601 - 120.600	60	76	40	2.3	RXKGL121 76 40 060	RXKBL121 76 40 060	●
RX 141	120.601 - 140.600	60	76	40	2.8	RXKGL141 76 40 060	RXKBL141 76 40 060	●

Attenzione: utilizzare la vite di tipo 35 per la versione RXKGL, 38 per la versione RXKBL
 Attention: Use the screw type 35 for the version RXKGL, 38 for the version RXKBL

Incluso nella fornitura: 1 set di viti e 1 Chiave torsiometrica Torx® (la chiave torque è raccomandata, a pag. 62)

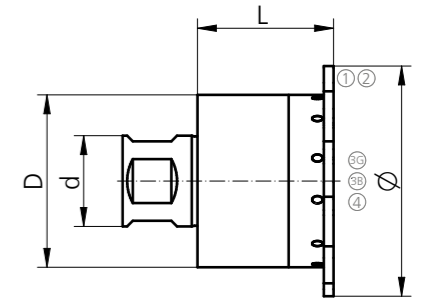
Scope of delivery: 1 Set of replacement screws and 1 Torx® screw driver (torque screw driver is recommended, page 62)

Assemblaggio e Manutenzione, «URMA Reaming Technology Guide»

See "URMA Reaming Technology Guide" for details on assembly and handling

RXKGL = per fori passanti
 RXKBL = per fori ciechi

RXKGL = for through bores
 RXKBL = for blind holes



Parti di Ricambio

Spare Parts

System Size	1	2	35	38	4
RX 044	C00 90 02 (4x)	G00 20 02	C00 26 23	C00 26 23B	G00 02 07
RX 052	C00 90 02 (5x)	G00 20 02	C00 26 38	C00 26 38B	G00 02 07
RX 061	C00 90 02 (5x)	G00 20 02	C00 24 26	C00 24 26B	G00 02 08
RX 081	C00 90 04 (4x)	G00 20 03	C00 26 37	C00 26 37B	G00 02 09
RX 101	C00 90 04 (4x)	G00 20 03	C00 24 31	C00 24 31B	G00 02 16
RX 121 /141	C00 90 04 (8x)	G00 20 03	C00 24 31	C00 24 31B	G00 02 16

● A magazzino On stock ▲ Disponibilità in breve periodo Short-term availability ○ Disponibilità su richiesta Availability on request

Tutte le dimensioni in mm All dimensions in mm

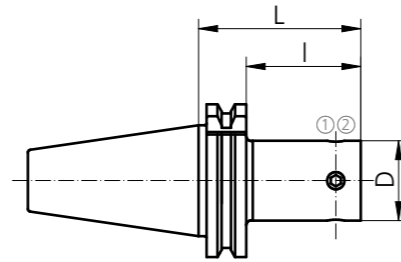
Ø 35.601 – 140.600 mm



Adattatori (con Sistema Integrato di Compensazione)
Adaptors (with Integrated Compensation Device)

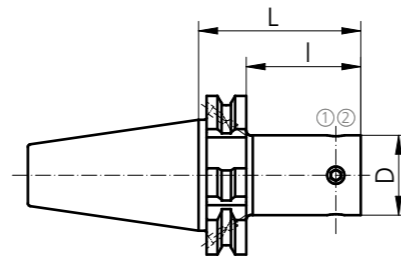
DIN 69871-AD

System Size	Size	L	I	D	kg	Order Number	Stock
RX 044	SK 40	65	46	32	1.1	RXAD10 40A 44 065	●
RX 052	SK 40	65	46	39	1.2	RXAD10 40A 52 065	●
RX 061	SK 40	75	56	46	1.4	RXAD10 40A 61 075	●
RX 081	SK 40	80	61	56	1.6	RXAD10 40A 81 080	●
RX 101 - RX 141	SK 40	95	76	76	2.2	RXAD10 40A 101 095	●
RX 044	SK 50	65	46	32	2.9	RXAD10 50A 44 065	●
RX 052	SK 50	65	46	39	3	RXAD10 50A 52 065	●
RX 061	SK 50	75	56	46	3.2	RXAD10 50A 61 075	●
RX 081	SK 50	85	66	56	3.6	RXAD10 50A 81 085	●
RX 101 - RX 141	SK 50	95	76	76	4.6	RXAD10 50A 101 095	●



DIN 69871-B

System Size	Size	L	I	D	kg	Order Number	Stock
RX 044	SK 40	65	46	32	1.1	RXAD10 40B 44 065	●
RX 052	SK 40	65	46	39	1.2	RXAD10 40B 52 065	●
RX 061	SK 40	75	56	46	1.4	RXAD10 40B 61 075	●
RX 081	SK 40	80	61	56	1.6	RXAD10 40B 81 080	●
RX 101 - RX 141	SK 40	95	76	76	2.2	RXAD10 40B 101 095	●
RX 044	SK 50	65	46	32	2.9	RXAD10 50B 44 065	●
RX 052	SK 50	65	46	39	3	RXAD10 50B 52 065	●
RX 061	SK 50	75	56	46	3.2	RXAD10 50B 61 075	●
RX 081	SK 50	85	66	56	3.6	RXAD10 50B 81 085	●
RX 101 - RX 141	SK 50	95	76	76	4.6	RXAD10 50B 101 095	●



Parti di Ricambio
Spare Parts

System Size	①	②
RX 044	C00 90 08 (4x)	G00 02 05
RX 052	C00 90 10 (4x)	G00 02 06
RX 061	C00 90 10 (4x)	G00 02 06
RX 081	C00 90 12 (4x)	G00 02 07
RX 101 - RX 141	C00 90 16 (4x)	G00 02 08

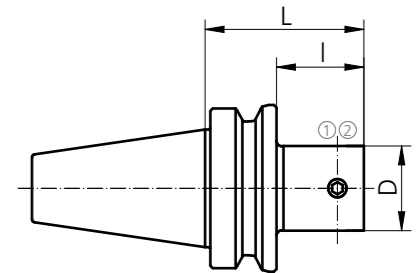
Ø 35.601 – 140.600 mm



Adattatori (con Sistema Integrato di Compensazione)
Adaptors (with Integrated Compensation Device)

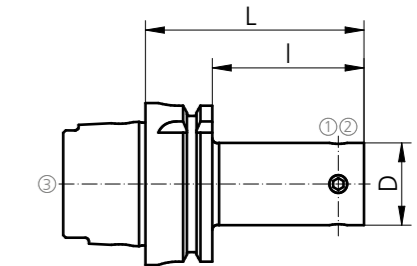
MAS-BT JIS 6339-AD

System Size	Size	L	I	D	kg	Order Number	Stock
RX 044	BT 40	60	33	32	1.1	RXAT10 40A 44 060	●
RX 052	BT 40	65	38	39	1.3	RXAT10 40A 52 065	●
RX 061	BT 40	70	43	46	1.4	RXAT10 40A 61 070	●
RX 081	BT 40	80	53	56	1.7	RXAT10 40A 81 080	●
RX 101 - RX 141	BT 40	95	-	76	2.5	RXAT10 40A 101 095	●
RX 044	BT 50	65	27	32	3.7	RXAT10 50A 44 065	●
RX 052	BT 50	65	27	39	3.8	RXAT10 50A 52 065	●
RX 061	BT 50	75	37	46	4	RXAT10 50A 61 075	●
RX 081	BT 50	85	47	56	4.3	RXAT10 50A 81 085	●
RX 101 - RX 141	BT 50	95	57	76	5.1	RXAT10 50A 101 095	●



DIN 69893-HSK-A

System Size	Size	L	I	D	kg	Order Number	Stock
RX 044	HSK 63	85	59	32	1	RXAH10 63A 44 085*	●
RX 052	HSK 63	90	64	39	1.2	RXAH10 63A 52 090*	●
RX 061	HSK 63	100	74	46	1.5	RXAH10 63A 61 100*	●
RX 081	HSK 63	105	79	56	1.8	RXAH10 63A 81 105*	●
RX 101 - RX 141	HSK 63	120	94	76	2.4	RXAH10 63A 101 120*	●
RX 044	HSK 100	90	61	32	2.3	RXAH10 100A 44 090*	●
RX 052	HSK 100	95	66	39	2.6	RXAH10 100A 52 095*	●
RX 061	HSK 100	100	71	46	2.8	RXAH10 100A 61 100*	●
RX 081	HSK 100	120	91	56	3.5	RXAH10 100A 81 120*	●
RX 101 - RX 141	HSK 100	130	101	76	5	RXAH10 100A 101 130*	●



* Tubo per liquidi di raffreddamento non incluso
* Coolant tube is not included

Parti di Ricambio
Spare Parts

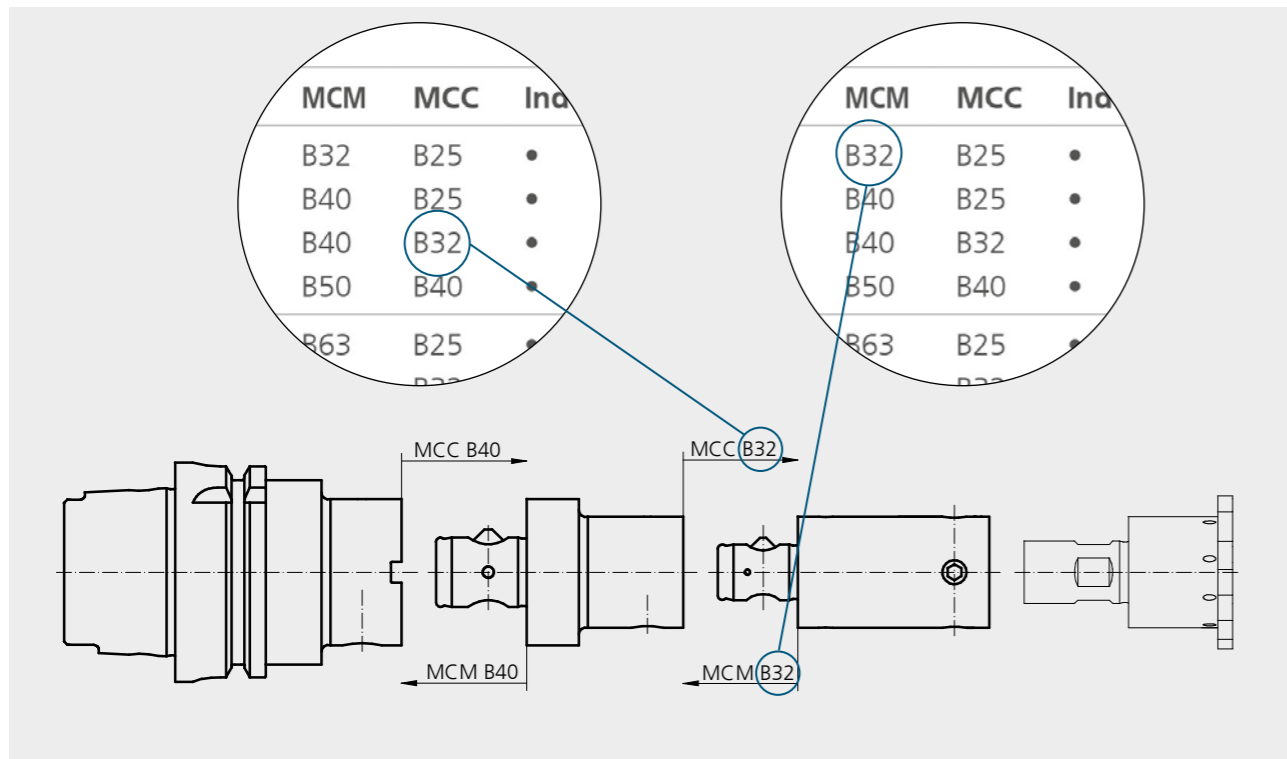
System Size	①	②
RX 044	C00 90 08 (4x)	G00 02 05
RX 052	C00 90 10 (4x)	G00 02 06
RX 061	C00 90 10 (4x)	G00 02 06
RX 081	C00 90 12 (4x)	G00 02 07
RX 101 - RX 141	C00 90 16 (4x)	G00 02 08

Tubo per Refrigerante
Coolant Tube

Size	③
63	H00 63 01
100	H00 100 01

Gestione dei codici di corrispondenza URMA

Handling of URMA Match Codes



MCC codice abbinamento direzione tagliente
MCM codice abbinamento direzione macchina

MCC Match Code towards Cutting Edges
MCM Match Code towards Machine

MCC e MCM mostrano i differenti abbinamenti per l'assemblaggio degli utensili. Questi codici devono corrispondere.

MCC and MCM show the different couplings to mount the tool components. These match codes have to correspond.

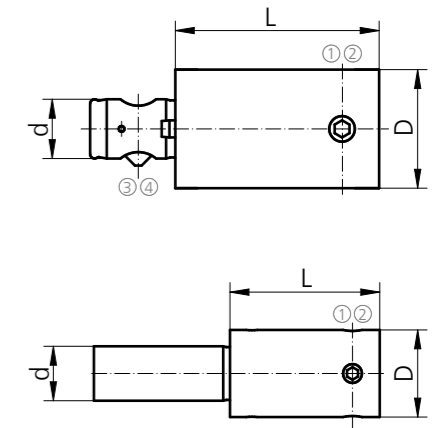
Ø 35.601 – 140.600 mm



Attacco (con Sistema Integrato di Compensazione)

Shanks (with Integrated Compensation Device)

System Size	Ø-Range	L	D	MCM	kg	Order Number	Stock
RX 044	35.601 - 43.600	55	32	B 32	0.3	RXA44 32 BM32 055	•
		80	32	B 32	0.45	RXA44 32 BM32 080	•
		55	32	ZS 20	0.4	RXA44 32 ZS20 055	•
		80	32	ZS 20	0.55	RXA44 32 ZS20 080	•
RX 052	43.601 - 51.600	60	39	B 40	0.55	RXA52 39 BM40 060	•
		100	39	B 40	0.9	RXA52 39 BM40 100	•
		60	39	ZS 25	0.65	RXA52 39 ZS25 060	•
		100	39	ZS 25	1	RXA52 39 ZS25 100	•
RX 061	51.601 - 60.600	70	46	B 50	0.9	RXA61 46 BM50 070	•
		120	46	B 50	1.6	RXA61 46 BM50 120	•
		70	46	ZS 32	1.1	RXA61 46 ZS32 070	•
		120	46	ZS 32	1.7	RXA61 46 ZS32 120	•
RX 081	60.601 - 80.600	80	56	B 50	1.2	RXA81 56 BM50 080	•
		140	56	B 50	2.1	RXA81 56 BM50 140	•
		80	56	ZS 40	1.6	RXA81 56 ZS40 080	•
		140	56	ZS 40	2.5	RXA81 56 ZS40 140	•
RX 101	80.601 - 140.600	100	76	B 63	2.5	RXA101 76 BM63 100	•
RX 121		160	76	B 63	3.9	RXA101 76 BM63 160	•
RX 141		100	76	ZS 40	2.8	RXA101 76 ZS40 100	•
		160	76	ZS 40	4.2	RXA101 76 ZS40 160	•



MCM / MCC = «Match Code» Descrizione vedi pagina 50

MCM / MCC = "Match Code" Description see page 50

Definizione di Tipi di Serraggio

Definition of Clamping Holder

BM = Modulo-Beta Urma (modulare)
ZS = Attacco Cilindrico DIN1835-A
WD = Weldon DIN1835-B*
WN = Whistle-Notch DIN 1835-E*
*su richiesta

BM = URMA Beta-Module (modular)
ZS = Cylindrical shank DIN 1835-A
WD = Weldon DIN 1835-B*
WN = Whistle-Notch DIN 1835-E*
*on request

Parti di Ricambio

Spare Parts

System Size	①	②	③	④
RX 044	C00 90 08 (4x)	G00 02 05	Z00 32 21	Z00 32 23
RX 052	C00 90 10 (4x)	G00 02 06	Z00 40 21	Z00 40 23
RX 061	C00 90 10 (4x)	G00 02 06	Z00 50 21	Z00 50 23
RX 081	C00 90 12 (4x)	G00 02 07	Z00 50 21	Z00 50 23
RX 101	C00 90 16 (4x)	G00 02 08	Z00 63 21	Z00 63 23
RX 121	C00 90 16 (4x)	G00 02 08	Z00 63 21	Z00 63 23
RX 141	C00 90 16 (4x)	G00 02 08	Z00 63 21	Z00 63 23

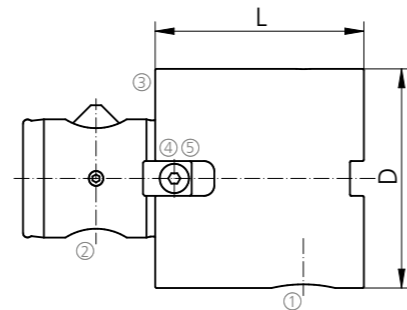
Ø 35.601 – 140.600 mm



Estensori Moduli-Beta
Extensions Beta-Module

Estensori Beta-Beta
Extensions Beta-Beta

Beta	L	D	MCM	MCC	kg	Order Number	Stock
32	35	32	B32	B32	0.2	B13 32 32 035	●
32	70	32	B32	B32	0.4	B13 32 32 070	●
40	45	42	B40	B40	0.4	B13 40 40 045	●
40	70	42	B40	B40	0.7	B13 40 40 070	●
50	65	50	B50	B50	1.0	B13 50 50 065	●
50	100	50	B50	B50	1.5	B13 50 50 100	●
63	60	63	B63	B63	1.3	B13 63 63 060	●
63	125	63	B63	B63	2.9	B13 63 63 125	●
80	80	80	B80	B80	2.9	B13 80 80 080	●
80	160	80	B80	B80	6	B13 80 80 160	●
100	80	100	B100	B100	4.9	B13 100 100 080	●
100	180	100	B100	B100	10.9	B13 100 100 180	●



MCM / MCC = «Match Code» Descrizione vedi pagina 50
MCM / MCC = "Match Code" Description see page 50

Parti di Ricambio
Spare Parts

Beta	①	②	③	④	⑤
25	Z00 25 24	Z00 25 21	Z00 25 23		
32	Z00 32 24	Z00 32 21	Z00 32 23		
40	Z00 40 24	Z00 40 21	Z00 40 23	Z00 40 25	C00 22 58
50	Z00 50 24	Z00 50 21	Z00 50 23	Z00 50 25	C00 22 60
63	Z00 63 24	Z00 63 21	Z00 63 23	Z00 63 25	C00 22 05
80	Z00 80 24	Z00 80 21	Z00 80 23	Z00 80 25	C00 22 07
100	Z00 100 24	Z00 100 21	Z00 100 23	Z00 100 25	C00 22 71

● A magazzino On stock
▲ Disponibilità in breve periodo Short-term availability
○ Disponibilità su richiesta Availability on request

Tutte le dimensioni in mm
All dimensions in mm

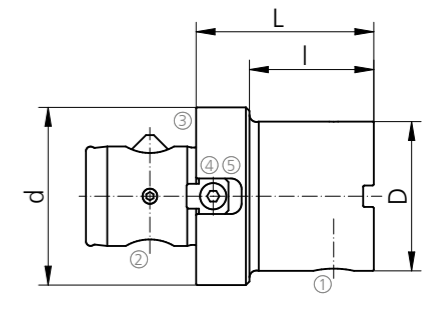
Ø 35.601 – 140.600 mm



Riduttori Modulo-Beta
Reducers Beta-Module

Riduttori Beta-Beta
Reducers Beta-Beta

Beta 1	Beta 2	L	I	D	d	MCM	MCC	kg	Order Number	Stock
40	32	45	30	32	42	B40	B32	0.3	B12 40 32 045	●
50	40	50	35	42	50	B50	B40	0.5	B12 50 40 050	●
63	32	50	30	32	63	B63	B32	0.9	B12 63 32 050	●
63	40	55	35	42	63	B63	B40	1.1	B12 63 40 055	●
63	50	60	40	50	63	B63	B50	1.1	B12 63 50 060	●
80	40	60	35	42	80	B80	B40	2.2	B12 80 40 060	●
80	63	60	35	63	80	B80	B63	2.4	B12 80 63 060	●
100	63	60	35	63	100	B100	B63	3.3	B12 100 63 060	●
100	80	75	50	80	100	B100	B80	3.5	B12 100 80 075	●



MCM / MCC = «Match Code» Descrizione vedi pagina 50
MCM / MCC = "Match Code" Description see page 50

Parti di Ricambio
Spare Parts

Beta	①	②	③	④	⑤
25	Z00 25 24	Z00 25 21	Z00 25 23		
32	Z00 32 24	Z00 32 21	Z00 32 23		
40	Z00 40 24	Z00 40 21	Z00 40 23	Z00 40 25	C00 22 58
50	Z00 50 24	Z00 50 21	Z00 50 23	Z00 50 25	C00 22 60
63	Z00 63 24	Z00 63 21	Z00 63 23	Z00 63 25	C00 22 05
80	Z00 80 24	Z00 80 21	Z00 80 23	Z00 80 25	C00 22 07
100	Z00 100 24	Z00 100 21	Z00 100 23	Z00 100 25	C00 22 71

● A magazzino On stock
▲ Disponibilità in breve periodo Short-term availability
○ Disponibilità su richiesta Availability on request

Tutte le dimensioni in mm
All dimensions in mm

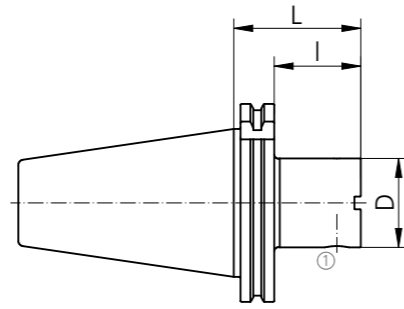
Ø 35.601 – 140.600 mm



Adattatori Modulo-Beta
System Holders Beta-Module

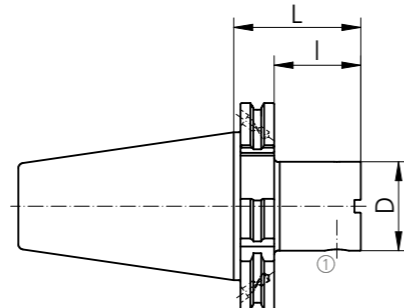
DIN 69871-AD

Size	Beta	L	I	D	MCC	kg	Order Number	Stock
SK 40	32	50	31	32	B32	0.9	BD10 40A 32 050	●
SK 40	40	35	16	42	B40	0.9	BD10 40A 40 035	●
SK 40	40	50	31	42	B40	1.1	BD10 40A 40 050	●
SK 40	50	50	31	50	B50	1.2	BD10 40A 50 050	●
SK 40	63	65	46	63	B63	1.5	BD10 40A 63 065	●
SK 50	32	60	41	32	B32	2.9	BD10 50A 32 060	●
SK 50	40	60	41	42	B40	3.0	BD10 50A 40 060	●
SK 50	50	60	41	50	B50	3.2	BD10 50A 50 060	●
SK 50	63	60	41	63	B63	3.3	BD10 50A 63 060	●
SK 50	80	70	51	80	B80	4.0	BD10 50A 80 070	●
SK 50	100	115	96	100	B100	6.9	BD10 50A 100 115	●



DIN 69871-B

Size	Beta	L	I	D	MCC	kg	Order Number	Stock
SK 40	40	35	16	42	B40	0.9	BD10 40B 40 035	●
SK 40	63	65	46	63	B63	1.5	BD10 40B 63 065	●
SK 50	32	60	41	32	B32	2.9	BD10 50B 32 060	●
SK 50	40	60	41	42	B40	3.0	BD10 50B 40 060	●
SK 50	50	60	41	50	B50	3.2	BD10 50B 50 060	●
SK 50	63	60	41	63	B63	3.3	BD10 50B 63 060	●
SK 50	100	115	96	100	B100	6.9	BD10 50B 100 115	●



MCM / MCC = «Match Code» Descrizione vedi pagina 50
MCM / MCC = "Match Code" Description see page 50

Parti di Ricambio
Spare Parts

Beta	①
32	Z00 32 24
40	Z00 40 24
50	Z00 50 24
63	Z00 63 24
80	Z00 80 24
100	Z00 100 24

- A magazzino / On stock
- ▲ Disponibilità in breve periodo / Short-term availability
- Disponibilità su richiesta / Availability on request

Tutte le dimensioni in mm
All dimensions in mm

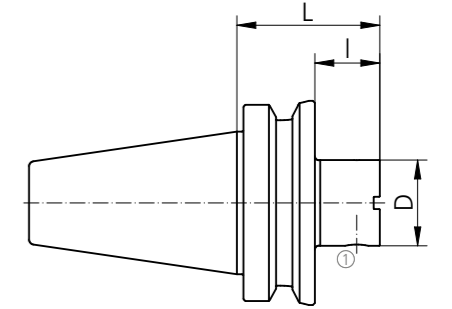
Ø 35.601 – 140.600 mm



Adattatori Moduli-Beta
System Holders Beta-Module

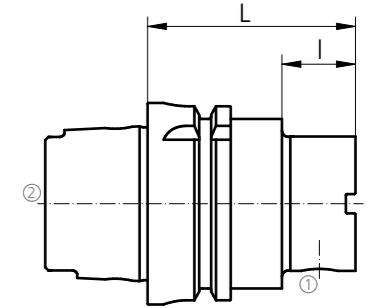
MAS-BT JIS 6339-AD

Size	Beta	L	I	D	MCC	kg	Order Number	Stock
BT 40	32	60	33	32	B32	0.9	BT10 40A 32 060	●
BT 40	40	28	1	42	B40	0.9	BT10 40A 40 028	●
BT 40	40	60	33	42	B40	1.2	BT10 40A 40 060	●
BT 40	50	60	33	50	B50	1.3	BT10 40A 50 060	●
BT 40	63	55	28	63	B63	1.4	BT10 40A 63 055	●
BT 50	32	70	32	32	B32	3.7	BT10 50A 32 070	●
BT 50	40	70	32	42	B40	3.9	BT10 50A 40 070	●
BT 50	50	70	32	50	B50	4.1	BT10 50A 50 070	●
BT 50	63	80	42	63	B63	4.3	BT10 50A 63 080	●
BT 50	80	100	62	80	B80	5.5	BT10 50A 80 100	●
BT 50	100	110	72	100	B100	7.0	BT10 50A 100 110	●



DIN 69893-HSK-A

Size	Beta	L	I	D	MCC	kg	Order Number	Stock
HSK 50	40	65	39	42	B40	0.9	BH10 50A 40 065*	○
HSK 63	32	60	34	32	B32	0.9	BH10 63A 32 060*	●
HSK 63	40	65	23	42	B40	1.2	BH10 63A 40 065*	●
HSK 63	50	70	44	50	B50	1.3	BH10 63A 50 070*	●
HSK 63	63	80	38	63	B63	1.4	BH10 63A 63 080*	●
HSK 100	32	60	31	32	B32	3.7	BH10 100A 32 060*	●
HSK 100	40	80	35	42	B40	3.9	BH10 100A 40 080*	●
HSK 100	50	80	35	50	B50	4.1	BH10 100A 50 080*	●
HSK 100	63	80	35	63	B63	4.3	BH10 100A 63 080*	●
HSK 100	80	90	45	80	B80	5.5	BH10 100A 80 090*	●
HSK 100	100	100	55	100	B100	7.0	BH10 100A 100 100*	●



* Tubo per liquidi di raffreddamento non incluso
* Coolant tube is not included

Parti di Ricambio
Spare Parts

Beta	①
32	Z00 32 24
40	Z00 40 24
50	Z00 50 24
63	Z00 63 24
80	Z00 80 24
100	Z00 100 24

Tubo per Refrigerante
Coolant Tube

Size	②
50	H00 50 01
63	H00 63 01
100	H00 100 01

Ø 35.601 – 140.600 mm

Adattatori Modulo-Beta
System Holders Beta-Module

ISO 26623-1-PSC

Size	Beta	L	I	D	MCC	kg	Order Number	Stock
PSC 63	40	55	30	42	B40	1.0	BC10 63 40 055	●
PSC 63	50	60	35	50	B50	1.2	BC10 63 50 060	●
PSC 63	63	65	40	63	B63	1.5	BC10 63 63 065	●

MCM / MCC = «Match Code» Descrizione vedi pagina 50
MCM / MCC = "Match Code" Description see page 50

ASME B5.50-CAT-AD

Size	Beta	L	I	D	MCC	kg	Order Number	Stock
CAT 40	25	60	25	25	B25	0.8	C4U4-B025	○
CAT 40	32	60	25	32	B32	0.9	C4U4-B032	○
CAT 40	40	60	25	42	B40	0.9	C4U4-B040	○
CAT 40	50	60	41	50	B50	1.2	C4U4-B050	○
CAT 40	63	65	46	63	B63	1.5	C4U4-B063	○
CAT 50	25	60	25	25	B25	2.8	C6U4-B025	○
CAT 50	32	60	25	32	B32	2.9	C6U4-B032	○
CAT 50	40	60	25	42	B40	3.0	C6U4-B040	○
CAT 50	50	60	25	50	B50	3.0	C6U4-B050	○
CAT 50	63	65	30	63	B63	3.0	C6U4-B063	○
CAT 50	80	75	40	80	B80	3.3	C6U4-B080	○
CAT 50	100	125	106	100	B100	4.5	C6U4-B100	○

Parti di Ricambio
Spare Parts

Beta	①
25	Z00 25 24
32	Z00 32 24
40	Z00 40 24
50	Z00 50 24
63	Z00 63 24
80	Z00 80 24
100	Z00 100 24

● A magazzino On stock ▲ Disponibilità in breve periodo Short-term availability ○ Disponibilità su richiesta Availability on request

Tutte le dimensioni in mm All dimensions in mm

Moduli Adattatori
Module Holders

DIN 69871-AD/B

Size	L	D	SW	Order Number	Stock
SK 40	50	60	4	AD10 40AB 60 050	●
SK 40	55	80	4	AD10 40AB 80 055	●
SK 40	60	100	5	AD10 40AB 100 060	○
SK 50	50	80	4	AD10 50AB 80 050	●
SK 50	60	100	5	AD10 50AB 100 060	●
SK 50	60	117	5	AD10 50AB 117 060	●
SK 50	60	140	5	AD10 50AB 140 060	○

ASME B5.50-CAT-AD/B*

Size	L	D	SW	Order Number	Stock
CAT 40	50	60	4	AC10 40AB 60 050	●
CAT 40	55	80	4	AC10 40AB 80 055	●
CAT 40	60	100	5	AC10 40AB 100 060	○
CAT 50	50	80	4	AC10 50AB 80 050	●
CAT 50	60	100	5	AC10 50AB 100 060	●
CAT 50	60	117	5	AC10 50AB 117 060	●
CAT 50	60	140	5	AC10 50AB 140 060	○

* CAT = filetto metrico a strappo incl. manopola di ritenzione
* CAT = metrical pull-stud thread incl. retention knob

Parti di Ricambio
Spare Parts

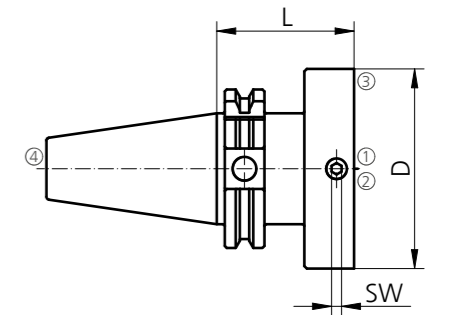
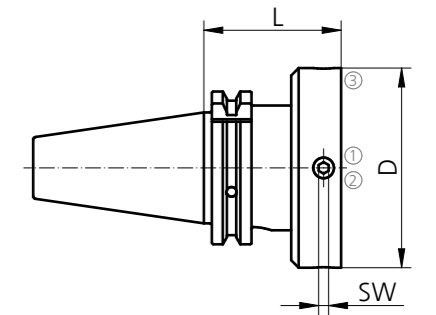
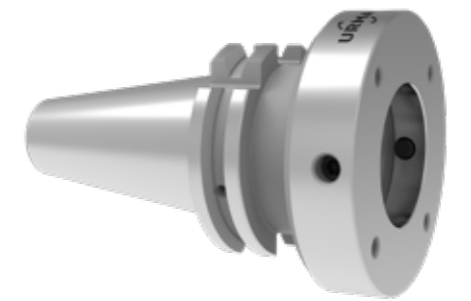
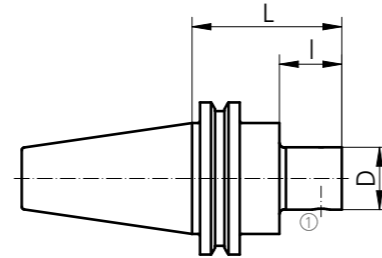
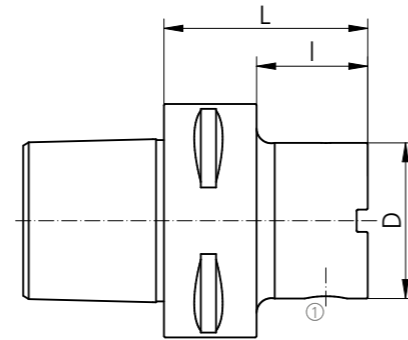
D	①	②
60	C00 03 37	G00 02 05
80	C00 03 37	G00 02 05
100	C00 03 28	G00 02 06
117	C00 03 28	G00 02 06
140	C00 03 28	G00 02 06

Accessori
Accessories

D	③	④
40		C97 40 00
50		C97 50 00
60	C00 22 13	
80	C00 22 02	
100	C00 22 15	
117	C00 22 15	
140	C00 22 64	

● A magazzino On stock ▲ Disponibilità in breve periodo Short-term availability ○ Disponibilità su richiesta Availability on request

Tutte le dimensioni in mm All dimensions in mm



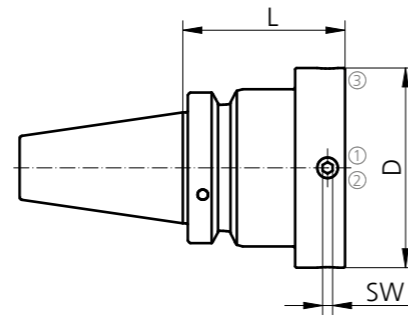
Moduli Adattatori

Module Holders



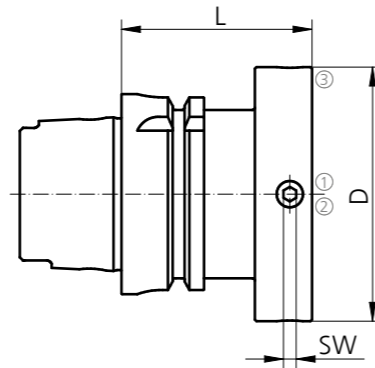
MAS-BT JIS 6339-AD/B

Size	L	D	SW	Order Number	Stock
BT 40	55	60	4	AT10 40AB 60 055	●
BT 40	65	80	4	AT10 40AB 80 065	●
BT 40	70	100	5	AT10 40AB 100 070	○
BT 50	70	80	4	AT10 50AB 80 070	●
BT 50	70	100	5	AT10 50AB 100 070	●
BT 50	80	117	5	AT10 50AB 117 080	●
BT 50	80	140	5	AT10 50AB 140 080	○



DIN 69893-HSK-A

Size	L	D	SW	Order Number	Stock
HSK 63	60	60	4	AH10 63A 60 060*	●
HSK 63	60	80	4	AH10 63A 80 060*	●
HSK 63	65	100	5	AH10 63A 100 065*	●
HSK 100	55	80	4	AH10 100A 80 055*	●
HSK 100	65	100	5	AH10 100A 100 065*	●
HSK 100	65	117	5	AH10 100A 117 065*	●
HSK 100	75	140	5	AH10 100A 140 075*	○



* Tubo per liquidi di raffreddamento non incluso
* Coolant tube is not included

Parti di Ricambio
Spare Parts

D	①	②
60	C00 03 37	G00 02 05
80	C00 03 37	G00 02 05
100	C00 03 28	G00 02 06
117	C00 03 28	G00 02 06
140	C00 03 28	G00 02 06

Accessori
Accessories

D	③
60	C00 22 13
80	C00 22 02
100	C00 22 15
117	C00 22 15
140	C00 22 64

Tubo per Refrigerante
Coolant Tube

Size	④
63	H00 63 01
100	H00 100 01

● A magazzino On stock
▲ Disponibilità in breve periodo Short-term availability
○ Disponibilità su richiesta Availability on request

Tutte le dimensioni in mm
All dimensions in mm

Accessori

Accessories

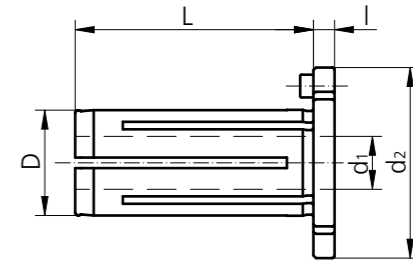
Accessori e Parti di Ricambio per Mandrini a Compensazione

Accessories and Spare Parts for Compensation Holder

Riduttori per Mandrini Idraulici a Compensazione

Reducers for Hydro-Compensation Chuck

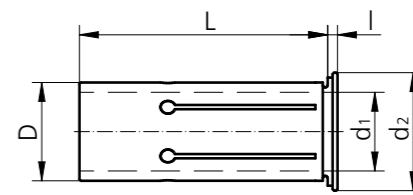
L	I	D	d ₁	d ₂	Order Number	Stock
49	4	12	10	26	67 12 10	●
49	4	20	10	36	67 20 10	●
49	4	20	12	36	67 20 12	●
49	4	20	16	36	67 20 16	●
69	4	32	20	51	67 32 20	●
69	4	32	25	51	67 32 25	●



Riduttori per Mandrini Idraulici a Compensazione «Schunk»

Reducers for Hydro-Compensation Chuck "Schunk"

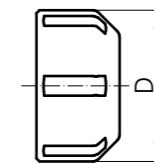
L	I	D	d ₁	d ₂	Order Number	Stock
50.5	2	20	10	24.0	0207927	●
50.5	2	20	12	24.0	0207929	●
50.5	2	20	16	24.0	0207933	●
60.5	3	32	20	35.5	0207947	●
60.5	3	32	25	35.5	0207948	●



Dado di Bloccaggio

Collet Nut for Seal Disk

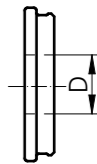
Type	D	Thread	Order Number	Stock
ER20	34	M25 x 1.5	20.107.310	●
ER25	42	M32 x 1.5	20.107.410	●
ER32	50	M40 x 1.5	20.107.510	●
ER40	63	M50 x 1.5	20.107.610	●



Rondella per Tenuta Stagna

Seal Disc for Collet Nut

Type	D	Order Number	Stock
ER20	3.0 - 13.0	20.107.31XXX	●
ER25	3.0 - 16.0	20.107.41XXX	●
ER32	3.0 - 20.0	20.107.51XXX	●
ER40	3.0 - 26.0	20.107.61XXX	●

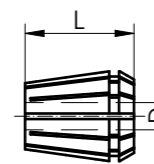


XXX = ø D Ø insert holders
Example: D = 12 = 20.107.41120

Pinze

Collets

Type	D	L	Order Number	Stock
ER20	3.0 - 13.0	31.5	62 20 XX	●
ER25	3.0 - 16.0	35	62 25 XX	●
ER32	3.0 - 20.0	40	62 32 XX	●
ER40	3.0 - 26.0	46	62 40 XX	●

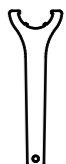


XX = ø D Example: D = 12 = 62 25 12

Chiave per Serraggio Dadi

Key for Collet Nut

Type	Order Number	Stock
ER20	00 05 12	●
ER25	00 05 05	●
ER32	00 05 02	●
ER40	00 05 03	●



Accessori

Accessories



RX Utensile Multifunzionale

RX Multifunctional Tool

Adattatore Aggiuntivo con Pinza di Serraggio

Additional Tool Adapters with Collet Chuck

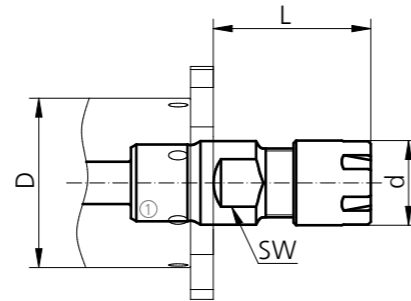
System Size	Type	Ø-Range	L	D	d	SW	Order Number	Stock
RX 044	ER11*	3.0 - 7.0	30	32	16	SW13	RXSZ44 11 030	○
RX 052	ER11*	3.0 - 7.0	30	32	16	SW13	RXSZ52 11 030	○
RX 061	ER16	3.0 - 10.0	42	46	28	SW22	RXSZ61 16 042	○
RX 081	ER20	3.0 - 13.0	45	56	34	SW27	RXSZ81 20 045	○
RX 101 - RX 141	ER32	3.0 - 20.0	55	76	50	SW41	RXSZ101 32 055	○

Il componente aggiuntivo funziona solo con l'RXKG...SZ di seguito (la rielaborazione è possibile)

* Il dado di bloccaggio deve essere ordinato separatamente (in relazione al diametro dello stelo)

Add-on works only with the RXKG...SZ below (rework possible)

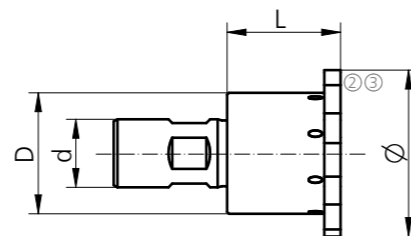
* Collet nut must be ordered separately (in relation to shank diameter)



Porta Inserti

Insert Holders

System Size	Ø-Range	L	D	d	kg	Order Number	Stock
RX 044	35.601 - 43.600	30	32	18	0.3	RXKG44 32 18 030SZ	○
RX 052	43.601 - 51.600	35	39	20	0.45	RXKG52 39 20 035SZ	○
RX 061	51.601 - 60.600	40	46	25	0.7	RXKG61 46 25 040SZ	○
RX 081	60.601 - 80.600	50	56	32	1.25	RXKG81 56 32 050SZ	○
RX 101	80.601 - 100.600	60	76	40	2.6	RXKG101 76 40 060SZ	○
RX 121	100.601 - 120.600	60	76	40	3.25	RXKG121 76 40 060SZ	○
RX 141	120.601 - 140.600	60	76	40	3.9	RXKG141 76 40 060SZ	○



Parti di Ricambio

Spare Parts

System Size	①	②	③
RX 044	Z00 90 09	C00 90 02 (4x)	G00 20 02
RX 052	Z00 90 09	C00 90 02 (5x)	G00 20 02
RX 061	Z00 90 09	C00 90 02 (5x)	G00 20 02
RX 081	Z00 90 09	C00 90 04 (4x)	G00 20 03
RX 101	Z00 90 09	C00 90 04 (4x)	G00 20 03
RX 121	Z00 90 09	C00 90 04 (8x)	G00 20 03
RX 141	Z00 90 09	C00 90 04 (8x)	G00 20 03

● A magazzino
On stock

▲ Disponibilità in breve periodo
Short-term availability

○ Disponibilità su richiesta
Availability on request

Tutte le dimensioni in mm
All dimensions in mm

Accessori

Accessories

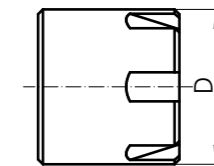
RX Utensile Multifunzionale

RX Multifunctional Tool

ER11 Dado per Refrigerante Interno (ERM11)

ER11 Collet Nut for Internal Coolant (ERM11)

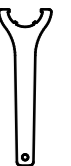
Nominal size	D	Seal Range	Order Number	Stock
ø 3	16	3.0 - 2.5	20.107.111	○
ø 3.5	16	3.5 - 3.0	20.107.112	○
ø 4	16	4.0 - 3.5	20.107.113	○
ø 4.5	16	4.5 - 4.0	20.107.114	○
ø 5	16	5.0 - 4.5	20.107.115	○
ø 5.5	16	5.5 - 5.0	20.107.116	○
ø 6	16	6.0 - 5.5	20.107.117	○
ø 6.5	16	6.5 - 6.0	20.107.118	○
ø 7	16	7.0 - 6.5	20.107.119	○



Chiave di Serraggio

Key for Collet Nut

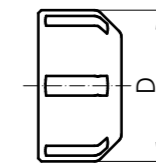
Type	Order Number	Stock
ER11 M	00 05 06	●
ER16 P	00 05 13	●
ER20 P	00 05 12	●
ER32	00 05 02	●



Dado di Serraggio

Collet Nut for Seal Disk

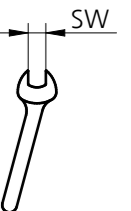
Type	D	Thread	Order Number	Stock
ER16 P	28	M22 x 1.5	20.107.210	●
ER20 P	34	M25 x 1.5	20.107.310	●
ER32	50	M40 x 1.5	20.107.510	●



Chiave

Spanner Wrench

Type	SW	Order Number	Stock
ER11	13	53 00 13	●
ER16	22	53 00 22	●
ER20	27	53 00 27	●
ER32	41	53 00 41	●

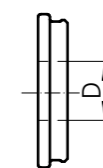


Rondella per Tenuta Stagna

Seal Disc for Collet Nut

Type	D	Order Number	Stock
ER16	3.0 - 10.0	20.107.21XXX	●
ER20	3.0 - 13.0	20.107.31XXX	●
ER32	3.0 - 20.0	20.107.51XXX	●

XXX = ø D Shank diameter Example: D = 12 = 20.107.41120

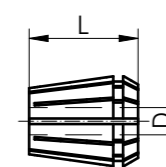


Pinze

Collets

Type	D	L	Order Number	Stock
ER11	3.0 - 7.0	18	62 11 XX	●
ER16	3.0 - 10.0	27.5	62 16 XX	●
ER20	3.0 - 13.0	31.5	62 20 XX	●
ER32	3.0 - 20.0	40	62 32 XX	●

XX = ø D Example: D = 12 = 62 25 12



Accessori

Accessories

Chiave Torsiometrica

Torque Screw Driver

System Size	Dimension	Torque	Order Number	Stock
RX 016	T6	0.9 Nm	G00 40 11	●
RX 019	T6	0.9 Nm	G00 40 11	●
RX 024	T8	1.5 Nm	G00 40 12	●
RX 029	T8	1.5 Nm	G00 40 12	●
RX 036	T8	1.5 Nm	G00 40 12	●
RX 044	T8	1.5 Nm	G00 40 12	●
RX 052	T8	1.5 Nm	G00 40 12	●
RX 061	T8	1.5 Nm	G00 40 12	●
RX 081	T15	3.5 Nm	G00 40 13	●
RX 101	T15	3.5 Nm	G00 40 13	●
RX 121	T15	3.5 Nm	G00 40 13	●
RX 141	T15	3.5 Nm	G00 40 13	●



Torx® Set di chiavi dinamometriche per supporti SD

Torx®-Torque Set of Wrenches for SD Holders

System Size	Dimension	Torque	Order Number	Stock
RX 016 - RX 036	T15 / T20 / T30	4 - 18 Nm	G00 40 20	▲
RX 016	T15	4 Nm	G00 40 23 *	▲
RX 019	T20	6 Nm	G00 40 24 *	▲
RX 024 / RX 029	T30	16 Nm	G00 40 25 *	▲
RX 036	T30	18 Nm	G00 40 25 *	▲



* Parti di Ricambio

* Spare Parts

Dispositivo di Misurazione

Measuring Device

Type	Description	Order Number	Stock
Twin T10	Dispositivo di misurazione elettronico, batterie incl. Electronic measuring instrument, batteries incl.	04430013	○
LRC 6, AA	Batterie (3 pz.) Batteries (3 piece)	04768002	○
GT 31	Tastatore Lever probe	03210802	○
MGA	Supporto magnetico con braccio articolato Magnetic articulated arm	01639022	○



Accessori

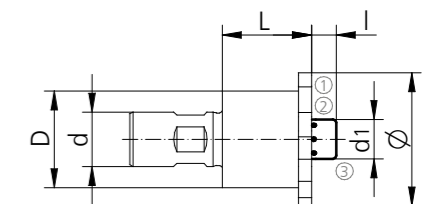
Accessories

Vite per Fori a Gradino

Step-Hole Flushing Screw



System Size	L	D	d	l	d1	Order Number	Stock
RX 044	30	32	18	8	13	Z90 02 00	●
RX 052	35	39	20	8	13	Z90 02 01	●
RX 061	40	46	25	10	16	Z90 02 02	●
RX 081	50	56	32	12	18	Z90 02 03	●
RX 101	60	76	40	14	24	Z90 02 04	●
RX 121	60	76	40	14	24	Z90 02 04	●
RX 141	60	76	40	14	24	Z90 02 04	●



Nota: Può essere utilizzato solo con RXKB e RXKBL

Note: Can only be used with RXKB and RXKBL

Porta Inserti Compatibili

Suitable Insert Holders

System Size	Ø-Range	L	D	d	Standard	Lightweight	Stock
					Order Number	Order Number	
RX 044	35.601 - 43.600	30	32	18	RXKB44 32 18 030		●
RX 052	43.601 - 51.600	35	39	20	RXKB52 39 20 035		●
RX 061	51.601 - 60.600	40	46	25	RXKB61 46 25 040		●
RX 081	60.601 - 80.600	50	56	32	RXKB81 56 32 050	RXKBL81 56 32 050	●
RX 101	80.601 - 100.600	60	76	40	RXKB101 76 40 060	RXKBL101 76 40 060	●
RX 121	100.601 - 120.600	60	76	40	RXKB121 76 40 060	RXKBL121 76 40 060	●
RX 141	120.601 - 140.600	60	76	40	RXKB141 76 40 060	RXKBL141 76 40 060	●

Parti di Ricambio

Spare Parts

System Size	①	②	③
RX 044	C00 90 02 (4x)	G00 20 02	G00 02 07
RX 052	C00 90 02 (5x)	G00 20 02	G00 02 07
RX 061	C00 90 02 (5x)	G00 20 02	G00 02 08
RX 081	C00 90 04 (4x)	G00 20 03	G00 02 09
RX 101	C00 90 04 (4x)	G00 20 03	G00 02 16
RX 121 / RX 141	C00 90 04 (8x)	G00 20 03	G00 02 16

● A magazzino
On stock

▲ Disponibilità in breve periodo
Short-term availability

○ Disponibilità su richiesta
Availability on request

Tutte le dimensioni in mm
All dimensions in mm

Accessori

Accessories

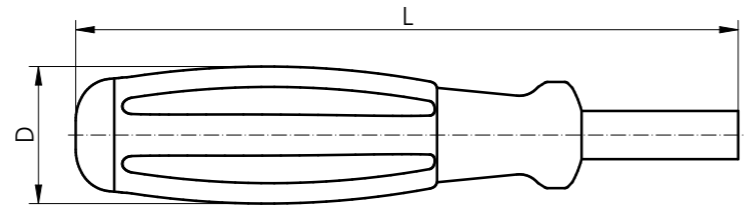
**Rimuovi Inserto**

Insert Remover

Porta Bit

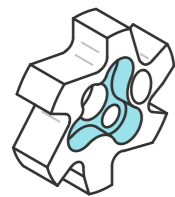
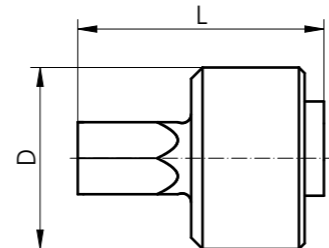
Bit Holder

System Size	L	D	Order Number	Stock
RX 016	138	29	G00 90 00	●
RX 016 SD	138	29	G00 90 00	●
RX 019	138	29	G00 90 00	●
RX 019 SD	138	29	G00 90 00	●

**Rimuovi Inserto Bit**

Insert Remover Bit

System Size	L	D	Order Number	Stock
RX 016	22	16	G00 90 16	●
RX 016 SD	22	16	G00 90 16SD	●
RX 019	22	16	G00 90 19	●
RX 019 SD	22	16	G00 90 19SD	●



Forma Regolare
Regular Shape



Forma SD
SD Shape

● A magazzino On stock
▲ Disponibilità in breve periodo Short-term availability
○ Disponibilità su richiesta Availability on request

Tutte le dimensioni in mm
All dimensions in mm

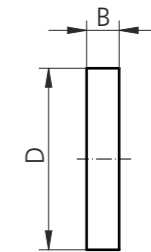
Accessori

Accessories

**Inserto Indicatore di Run-Out**

Run-Out Indicating Insert

System Size	D	B	Order Number	Stock
RX 016	16	4.3	RXC016	●
RX 019	19	4.3	RXC019	●
RX 024	24	4.3	RXC024	●
RX 029	29	4.3	RXC029	●
RX 036	36	4.3	RXC036	●



● A magazzino On stock
▲ Disponibilità in breve periodo Short-term availability
○ Disponibilità su richiesta Availability on request

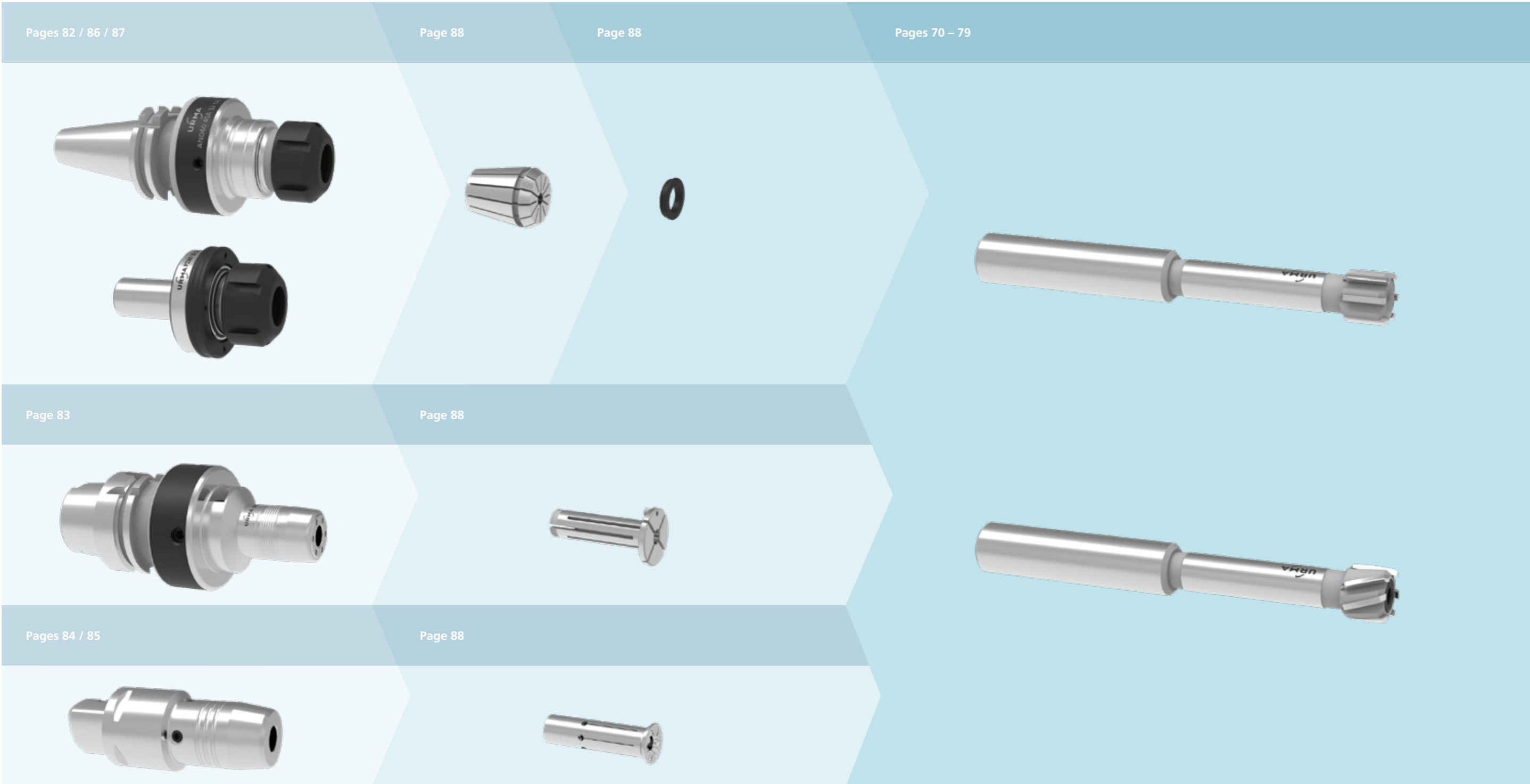
Tutte le dimensioni in mm
All dimensions in mm

URMA Reaming
RM vario

Ø 5.80 – 33.10 mm

Ø 5.80 – 33.10 mm

URMA Reaming RM vario



Ø 5.80 – 33.10 mm

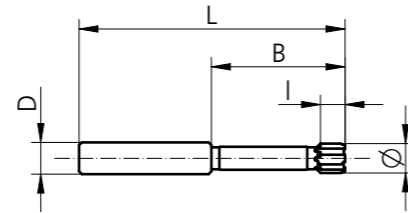


Alesatori solidi, cilindrici (senza fornitura refrigerante)
Solid Reamers, Cylindrical (without internal coolant supply)

A25N

Inserti Scanalati Dritti
Straight Fluted Inserts

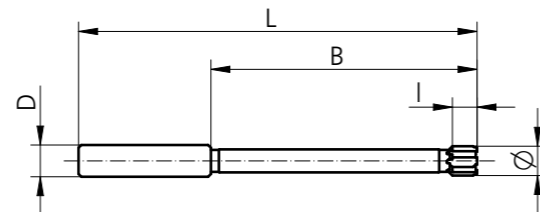
Ø-Range	L	I	B	D _{h6}	Z	Stock
5.80 - 7.60	80	10	40	12	4	▲
7.61 - 8.60	80	10	40	12	4	▲
8.61 - 9.60	90	10	50	12	4	▲
9.61 - 10.60	90	10	50	12	4	▲
10.61 - 14.60	100	10	50	12	6	▲
14.61 - 15.60	100	14	50	12	6	▲
15.61 - 18.60	110	14	50	16	6	▲
18.61 - 21.10	130	14	60	20	6	▲
21.11 - 25.10	130	14	60	20	6	▲
25.11 - 28.10	145	18	75	25	6	▲
28.11 - 33.10	145	18	75	25	6	▲



A45N

Inserti Scanalati Dritti
Straight Fluted Inserts

Ø-Range	L	I	B	D _{h6}	Z	Stock
5.80 - 7.60	120	10	80	12	4	▲
7.61 - 8.60	120	10	80	12	4	▲
8.61 - 9.60	130	10	90	12	4	▲
9.61 - 10.60	130	10	90	12	4	▲
10.61 - 14.60	150	10	100	12	6	▲
14.61 - 15.60	150	14	100	12	6	▲
15.61 - 18.60	160	14	100	16	6	▲
18.61 - 21.10	190	14	120	20	6	▲
21.11 - 25.10	190	14	120	20	6	▲
25.11 - 28.10	220	18	150	25	6	▲
28.11 - 33.10	220	18	150	25	6	▲



● A magazzino On stock
▲ Disponibilità in breve periodo Short-term availability
○ Disponibilità su richiesta Availability on request

Tutte le dimensioni in mm
All dimensions in mm

Ø 5.80 – 33.10 mm

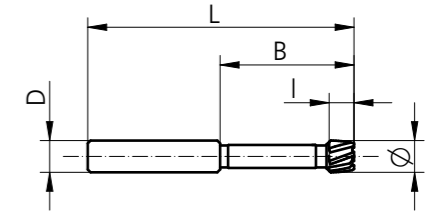


Alesatori solidi, cilindrici (senza fornitura refrigerante)
Solid Reamers, Cylindrical (without internal coolant supply)

A27N

Inserti Scanalati Dritti
Left Helical Fluted Inserts

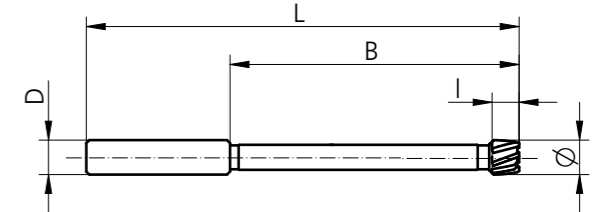
Ø-Range	L	I	B	D _{h6}	Z	Stock
5.80 - 7.60	80	10	40	12	4	▲
7.61 - 8.60	80	10	40	12	4	▲
8.61 - 9.60	90	10	50	12	4	▲
9.61 - 10.60	90	10	50	12	4	▲
10.61 - 14.60	100	10	50	12	6	▲
14.61 - 15.60	100	14	50	12	6	▲
15.61 - 18.60	110	14	50	16	6	▲
18.61 - 21.10	130	14	60	20	6	▲
21.11 - 25.10	130	14	60	20	6	▲
25.11 - 28.10	145	18	75	25	6	▲
28.11 - 33.10	145	18	75	25	6	▲



A47N

Inserti Scanalati Dritti
Left Helical Fluted Inserts

Ø-Range	L	I	B	D _{h6}	Z	Stock
5.80 - 7.60	120	10	80	12	4	▲
7.61 - 8.60	120	10	80	12	4	▲
8.61 - 9.60	130	10	90	12	4	▲
9.61 - 10.60	130	10	90	12	4	▲
10.61 - 14.60	150	10	100	12	6	▲
14.61 - 15.60	150	14	100	12	6	▲
15.61 - 18.60	160	14	100	16	6	▲
18.61 - 21.10	190	14	120	20	6	▲
21.11 - 25.10	190	14	120	20	6	▲
25.11 - 28.10	220	18	150	25	6	▲
28.11 - 33.10	220	18	150	25	6	▲



● A magazzino On stock
▲ Disponibilità in breve periodo Short-term availability
○ Disponibilità su richiesta Availability on request

Tutte le dimensioni in mm
All dimensions in mm

Ø 5.80 – 33.10 mm



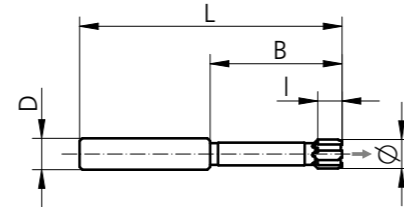
Alesatori solidi, cilindrici (con fornitura refrigerante)
Solid Reamers, Cylindrical (with internal coolant supply)

C25N / B25N

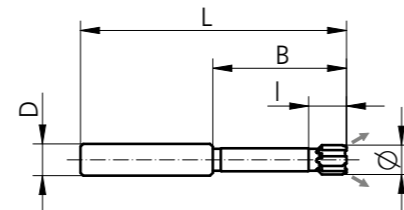
Inserti Scanalati Dritti
Straight Fluted Inserts

Ø-Range	L	I	B	D _{h6}	Z	Stock
5.80 - 7.60	80	10	40	12	4	▲
7.61 - 8.60	80	10	40	12	4	▲
8.61 - 9.60	90	10	50	12	4	▲
9.61 - 10.60	90	10	50	12	4	▲
10.61 - 14.60	100	10	50	12	6	▲
14.61 - 15.60	100	14	50	12	6	▲
15.61 - 18.60	110	14	50	16	6	▲
18.61 - 21.10	130	14	60	20	6	▲
21.11 - 25.10	130	14	60	20	6	▲
25.11 - 28.10	145	18	75	25	6	▲
28.11 - 33.10	145	18	75	25	6	▲

C25N



B25N

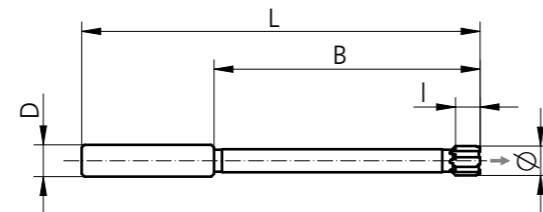


C45N / B45N

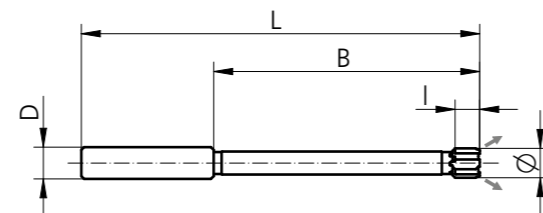
Inserti Scanalati Dritti
Straight Fluted Inserts

Ø-Range	L	I	B	D _{h6}	Z	Stock
5.80 - 7.60	120	10	80	12	4	▲
7.61 - 8.60	120	10	80	12	4	▲
8.61 - 9.60	130	10	90	12	4	▲
9.61 - 10.60	130	10	90	12	4	▲
10.61 - 14.60	150	10	100	12	6	▲
14.61 - 15.60	150	14	100	12	6	▲
15.61 - 18.60	160	14	100	16	6	▲
18.61 - 21.10	190	14	120	20	6	▲
21.11 - 25.10	190	14	120	20	6	▲
25.11 - 28.10	220	18	150	25	6	▲
28.11 - 33.10	220	18	150	25	6	▲

C45N



B45N



● A magazzino On stock
▲ Disponibilità in breve periodo Short-term availability
○ Disponibilità su richiesta Availability on request

Tutte le dimensioni in mm
All dimensions in mm

Ø 5.80 – 33.10 mm

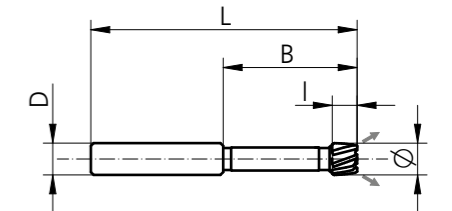


Alesatori solidi, cilindrici (con fornitura refrigerante)
Solid Reamers, Cylindrical (with internal coolant supply)

B27N

Inserti Scanalati Elicoidali Sinistri
Left Helical Fluted Inserts

Ø-Range	L	I	B	D _{h6}	Z	Stock
5.80 - 7.60	80	10	40	12	4	▲
7.61 - 8.60	80	10	40	12	4	▲
8.61 - 9.60	90	10	50	12	4	▲
9.61 - 10.60	90	10	50	12	4	▲
10.61 - 14.60	100	10	50	12	6	▲
14.61 - 15.60	100	14	50	12	6	▲
15.61 - 18.60	110	14	50	16	6	▲
18.61 - 21.10	130	14	60	20	6	▲
21.11 - 25.10	130	14	60	20	6	▲
25.11 - 28.10	145	18	75	25	6	▲
28.11 - 33.10	145	18	75	25	6	▲



● A magazzino On stock
▲ Disponibilità in breve periodo Short-term availability
○ Disponibilità su richiesta Availability on request

Tutte le dimensioni in mm
All dimensions in mm

Ø 5.80 – 33.10 mm

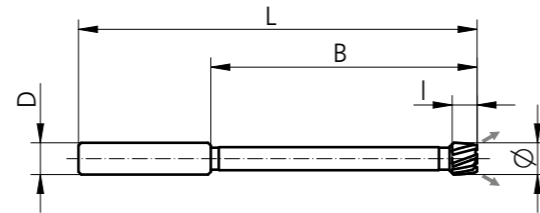


Alesatori solidi, cilindrici (con fornitura refrigerante)
Solid Reamers, Cylindrical (with internal coolant supply)

B47N

Inserti Scanalati Elicoidali Sinistri
Left Helical Fluted Inserts

Ø-Range	L	I	B	D _{h6}	Z	Stock
5.80 - 7.60	120	10	80	12	4	▲
7.61 - 8.60	120	10	80	12	4	▲
8.61 - 9.60	130	10	90	12	4	▲
9.61 - 10.60	130	10	90	12	4	▲
10.61 - 14.60	150	10	100	12	6	▲
14.61 - 15.60	150	14	100	12	6	▲
15.61 - 18.60	160	14	100	16	6	▲
18.61 - 21.10	190	14	120	20	6	▲
21.11 - 25.10	190	14	120	20	6	▲
25.11 - 28.10	220	18	150	25	6	▲
28.11 - 33.10	220	18	150	25	6	▲



● A magazzino On stock
▲ Disponibilità in breve periodo Short-term availability
○ Disponibilità su richiesta Availability on request

Tutte le dimensioni in mm
All dimensions in mm

Ø 5.80 – 33.10 mm

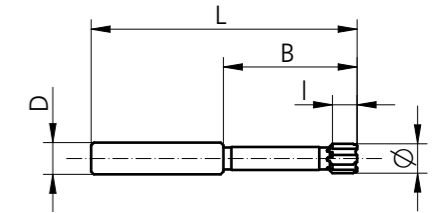


Alesatori espandibili, cilindrici (senza fornitura refrigerante)
Expandable Reamers, Cylindrical (without internal coolant supply)

D25N

Inserti Scanalati Dritti
Straight Fluted Inserts

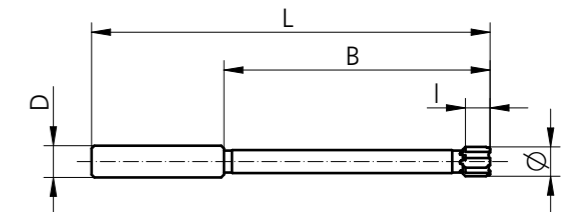
Ø-Range	L	I	B	D _{h6}	Z	Stock
5.80 - 7.60	80	10	40	12	4	▲
7.61 - 8.60	80	10	40	12	4	▲
8.61 - 9.60	90	10	50	12	4	▲
9.61 - 10.60	90	10	50	12	4	▲
10.61 - 14.60	100	10	50	12	6	▲
14.61 - 15.60	100	14	50	12	6	▲
15.61 - 18.60	110	14	50	16	6	▲
18.61 - 21.10	130	14	60	20	6	▲
21.11 - 25.10	130	14	60	20	6	▲
25.11 - 28.10	145	18	75	25	6	▲
28.11 - 33.10	145	18	75	25	6	▲



D45N

Inserti Scanalati Dritti
Straight Fluted Inserts

Ø-Range	L	I	B	D _{h6}	Z	Stock
5.80 - 7.60	120	10	80	12	4	▲
7.61 - 8.60	120	10	80	12	4	▲
8.61 - 9.60	130	10	90	12	4	▲
9.61 - 10.60	130	10	90	12	4	▲
10.61 - 14.60	150	10	100	12	6	▲
14.61 - 15.60	150	14	100	12	6	▲
15.61 - 18.60	160	14	100	16	6	▲
18.61 - 21.10	190	14	120	20	6	▲
21.11 - 25.10	190	16	120	20	6	▲
25.11 - 28.10	220	18	150	25	6	▲
28.11 - 33.10	220	18	150	25	6	▲



● A magazzino On stock
▲ Disponibilità in breve periodo Short-term availability
○ Disponibilità su richiesta Availability on request

Tutte le dimensioni in mm
All dimensions in mm

Ø 5.80 – 33.10 mm

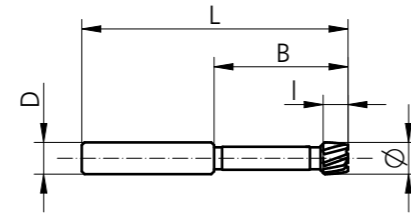


Alesatori espandibili, cilindrici (senza fornitura refrigerante)
Expandable Reamers, Cylindrical (without internal coolant supply)

D27N

Inserti Scanalati Elicoidali Sinistri
Left Helical Fluted Inserts

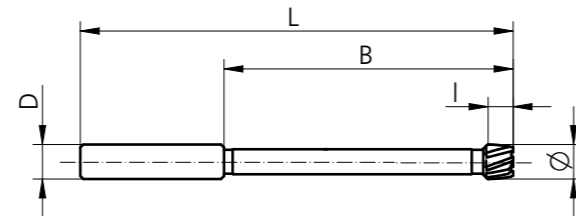
Ø-Range	L	I	B	D _{h6}	Z	Stock
5.80 - 7.60	80	10	40	12	4	▲
7.61 - 8.60	80	10	40	12	4	▲
8.61 - 9.60	90	10	50	12	4	▲
9.61 - 10.60	90	10	50	12	4	▲
10.61 - 14.60	100	10	50	12	6	▲
14.61 - 15.60	100	14	50	12	6	▲
15.61 - 18.60	110	14	50	16	6	▲
18.61 - 21.10	130	14	60	20	6	▲
21.11 - 25.10	130	14	60	20	6	▲
25.11 - 28.10	145	18	75	25	6	▲
28.11 - 33.10	145	18	75	25	6	▲



D47N

Inserti Scanalati Elicoidali Sinistri
Left Helical Fluted Inserts

Ø-Range	L	I	B	D _{h6}	Z	Stock
5.80 - 7.60	120	10	80	12	4	▲
7.61 - 8.60	120	10	80	12	4	▲
8.61 - 9.60	130	10	90	12	4	▲
9.61 - 10.60	130	10	90	12	4	▲
10.61 - 14.60	150	10	100	12	6	▲
14.61 - 15.60	150	14	100	12	6	▲
15.61 - 18.60	160	14	100	16	6	▲
18.61 - 21.10	190	14	120	20	6	▲
21.11 - 25.10	190	14	120	20	6	▲
25.11 - 28.10	220	18	150	25	6	▲
28.11 - 33.10	220	18	150	25	6	▲



● A magazzino On stock
▲ Disponibilità in breve periodo Short-term availability
○ Disponibilità su richiesta Availability on request

Tutte le dimensioni in mm
All dimensions in mm

Ø 5.80 – 33.10 mm



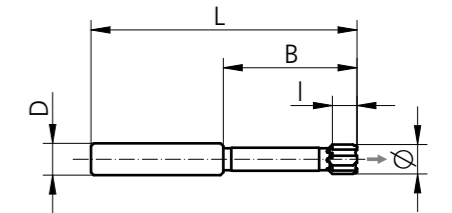
Alesatori espandibili, cilindrici (con fornitura refrigerante)
Expandable Reamers, Cylindrical (with internal coolant supply)

G25N / F25N

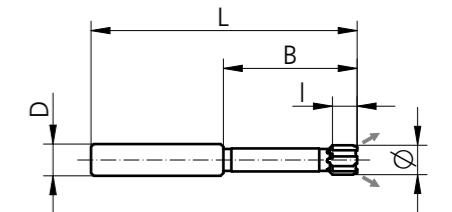
Inserti Scanalati Dritti
Straight Fluted Inserts

Ø-Range	L	I	B	D _{h6}	Z	Stock
5.80 - 7.60	80	10	40	12	4	▲
7.61 - 8.60	80	10	40	12	4	▲
8.61 - 9.60	90	10	50	12	4	▲
9.61 - 10.60	90	10	50	12	4	▲
10.61 - 14.60	100	10	50	12	6	▲
14.61 - 15.60	100	14	50	12	6	▲
15.61 - 18.60	110	14	50	16	6	▲
18.61 - 21.10	130	14	60	20	6	▲
21.11 - 25.10	130	14	60	20	6	▲
25.11 - 28.10	145	18	75	25	6	▲
28.11 - 33.10	145	18	75	25	6	▲

G25N



F25N



● A magazzino On stock
▲ Disponibilità in breve periodo Short-term availability
○ Disponibilità su richiesta Availability on request

Tutte le dimensioni in mm
All dimensions in mm

Ø 5.80 – 33.10 mm



Alesatori espandibili, cilindrici (con fornitura refrigerante)

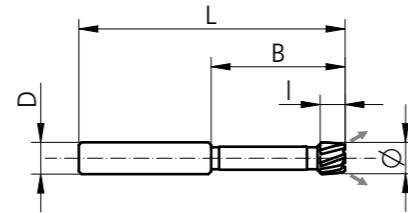
Expandable Reamers, Cylindrical (with internal coolant supply)

F27N

Inserti Scanalati Elicoidali Sinistri

Left Helical Fluted Inserts

Ø-Range	L	I	B	D _{h6}	Z	Stock
5.80 - 7.60	80	10	40	12	4	▲
7.61 - 8.60	80	10	40	12	4	▲
8.61 - 9.60	90	10	50	12	4	▲
9.61 - 10.60	90	10	50	12	4	▲
10.61 - 14.60	100	10	50	12	6	▲
14.61 - 15.60	100	14	50	12	6	▲
15.61 - 18.60	110	14	50	16	6	▲
18.61 - 21.10	130	14	60	20	6	▲
21.11 - 25.10	130	14	60	20	6	▲
25.11 - 28.10	145	18	75	25	6	▲
28.11 - 33.10	145	18	75	25	6	▲

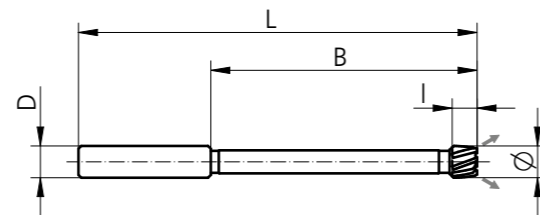


F47N

Inserti Scanalati Elicoidali Sinistri

Left Helical Fluted Inserts

Ø-Range	L	I	B	D _{h6}	Z	Stock
5.80 - 7.60	120	10	80	12	4	▲
7.61 - 8.60	120	10	80	12	4	▲
8.61 - 9.60	130	10	90	12	4	▲
9.61 - 10.60	130	10	90	12	4	▲
10.61 - 14.60	150	10	100	12	6	▲
14.61 - 15.60	150	14	100	12	6	▲
15.61 - 18.60	160	14	100	16	6	▲
18.61 - 21.10	190	14	120	20	6	▲
21.11 - 25.10	190	16	120	20	6	▲
25.11 - 28.10	220	18	150	25	6	▲
28.11 - 33.10	220	18	150	25	6	▲



● A magazzino On stock
▲ Disponibilità in breve periodo Short-term availability
○ Disponibilità su richiesta Availability on request

Tutte le dimensioni in mm
All dimensions in mm

Ø 5.80 – 33.10 mm



Alesatori espandibili, cilindrici (con fornitura refrigerante)

Expandable Reamers, Cylindrical (with internal coolant supply)

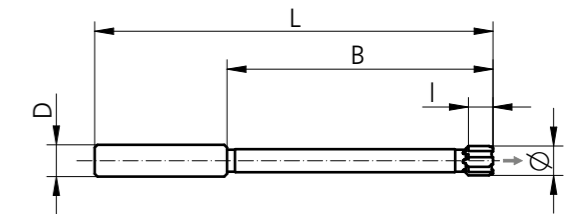
G45N / F45N

Inserti Scanalati Dritti

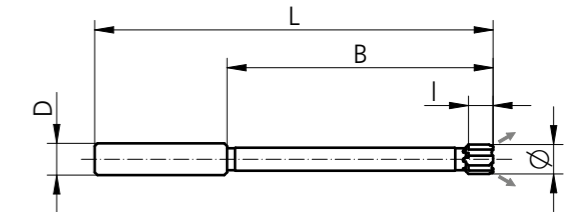
Straight Fluted Inserts

Ø-Range	L	I	B	D _{h6}	Z	Stock
5.80 - 7.60	120	10	80	12	4	▲
7.61 - 8.60	120	10	80	12	4	▲
8.61 - 9.60	130	10	90	12	4	▲
9.61 - 10.60	130	10	90	12	4	▲
10.61 - 14.60	150	10	100	12	6	▲
14.61 - 15.60	150	14	100	12	6	▲
15.61 - 18.60	160	14	100	16	6	▲
18.61 - 21.10	190	14	120	20	6	▲
21.11 - 25.10	190	14	120	20	6	▲
25.11 - 28.10	220	14	150	25	6	▲
28.11 - 33.10	220	18	150	25	6	▲

G45N



F45N



● A magazzino On stock
▲ Disponibilità in breve periodo Short-term availability
○ Disponibilità su richiesta Availability on request

Tutte le dimensioni in mm
All dimensions in mm

Come Ordinare

Order Example

Diametro foro: Tolleranze foro ISO

Bore diameter: ISO bore tolerances

Diametro foro: Tolleranze foro in μm

Bore diameter: Bore tolerance in μm

Example

Come ordinare

Order example
F25N-12.2H7-A W112R

Come ordinare

Order example
F25N-12.2+20-10-A W112R

Example

F

Attacco cilindrico

A = fisso, senza fornitura di refrigerante interna
B = fisso, con fornitura di refrigerante interna per fori passanti
C = fisso, con fornitura di refrigerante interna per fori ciechi
D = espandibile, senza fornitura di refrigerante interna
F = espandibile, con fornitura di refr. interna per fori passanti
G = espandibile con fornitura di refr. interna per fori ciechi
S = Utensile speciale (secondo quote disegno)

Cylindrical shank

A = solid, without internal coolant supply
B = solid, with internal coolant supply for through bores
C = solid, with internal coolant supply for blind holes
D = expandable, without internal coolant supply
F = expandable, with internal coolant supply for through bores
G = expandable, with internal coolant supply for blind holes
S = special tool (according to drawing)

2

2 = Versione corta
4 = Versione lunga

2 = short version
4 = long version

5N

5N = Scanalatura dritta
7N = Scanalatura elicoidali a sinistra

5N = flute form straight
7N = flute form left-hand helix

Diameter

12.2

Diametro (mm)

Diameter (mm)

H7

Tolleranza standard ISO

Tolerance in ISO standard

A

Angolo di smusso

A = 45°¹ B = 25°² C = 45/8° D = 30/4°
E = Taglio a spirale 20°³ F = Taglio di testa G = 0,5 x 45°
H = 30° I = 60° K = 75° L = Taglio a spirale 30°³

Chamfer Angle

A = 45°¹ B = 25°² C = 45/8° D = 30/4°
E = Curling cut 20°³ F = Face cutting G = 0,5 x 45°
H = 30° I = 60° K = 75° L = Curling cut 30°³

W1

Materiale di taglio

Per i dettagli, guarda "Technology Guide"

Cutting material

For details see «Reaming Technology Guide»

12R

Rivestimento

Per i dettagli, guarda "Technology Guide"

Coating

For details see «Reaming Technology Guide»

F

Attacco cilindrico

A = fisso, senza fornitura di refrigerante interna
B = fisso, con fornitura di refrigerante interna per fori passanti
C = fisso, con fornitura di refrigerante interna per fori ciechi
D = espandibile, senza fornitura di refrigerante interna
F = espandibile, con fornitura di refr. interna per fori passanti
G = espandibile con fornitura di refr.interna per fori ciechi
S = Utensile speciale (secondo quote disegno)

Cylindrical shank

A = solid, without internal coolant supply
B = solid, with internal coolant supply for through bores
C = solid, with internal coolant supply for blind holes
D = expandable, without internal coolant supply
F = expandable, with internal coolant supply for through bores
G = expandable, with internal coolant supply for blind holes
S = special tool (according to drawing)

2

2 = Versione corta
4 = Versione lunga

2 = short version
4 = long version

5N

5N = Scanalatura dritta
7N = Scanalatura elicoidali a sinistra

5N = flute form straight
7N = flute form left-hand helix

Diameter

12.2

Diametro (mm)

Diameter (mm)

+20-10

Tolleranza fori (μm)

Bore tolerance (μm)

A

Angolo di smusso

A = 45°¹ B = 25°² C = 45/8° D = 30/4°
E = Taglio a spirale 20°³ F = Taglio di testa G = 0,5 x 45°
H = 30° I = 60° K = 75° L = Taglio a spirale 30°³

Chamfer Angle

A = 45°¹ B = 25°² C = 45/8° D = 30/4°
E = Curling cut 20°³ F = Face cutting G = 0,5 x 45°
H = 30° I = 60° K = 75° L = Curling cut 30°³

W1

Materiale di taglio

Per i dettagli, guarda "Technology Guide"

Cutting material

For details see «Reaming Technology Guide»

12R

Rivestimento

Per i dettagli, guarda "Technology Guide"

Coating

For details see «Reaming Technology Guide»

¹ Standard per scanalature dritte
¹ Standard for straight flute form

² Per utensili con scanalature elicoidali a sinistra
² Standard for tools with left-hand flute form

³ solo per scanalature dritte
³ only for straight flute form

Ø 5.80 – 33.10 mm

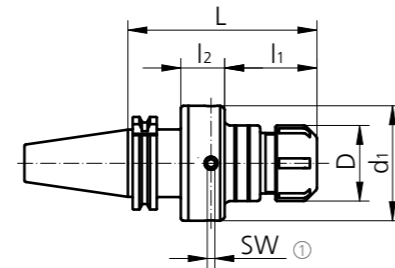


Mandrino a Compensazione con Pinze di Serraggio

Compensation Collet Chuck

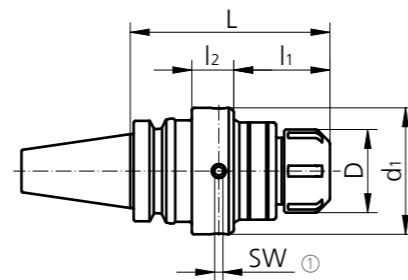
DIN 69871-AD

Size	Type	Ø-Range	L	l ₁	l ₂	D	d ₁	SW	kg	Order Number	Stock
SK 40	ER32	3.0 - 20.0	120	56	29	50	76	5	2.2	AND60 40A 32 120	▲
SK 40	ER40	3.0 - 26.0	135	68	32	63	76	5	2.2	AND60 40A 40 135	▲
SK 50	ER32	3.0 - 20.0	120	61	24	50	76	5	4.1	AND60 50A 32 120	▲
SK 50	ER40	3.0 - 26.0	135	76	24	63	76	5	4.2	AND60 50A 40 135	▲



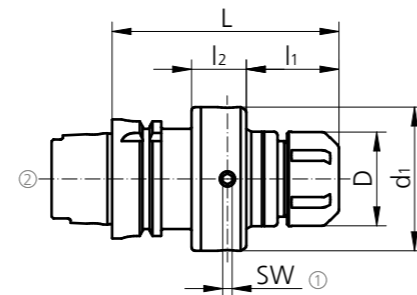
MAS-BT JIS 6339-AD

Size	Type	Ø-Range	L	l ₁	l ₂	D	d ₁	SW	kg	Order Number	Stock
BT 40	ER32	3.0 - 20.0	120	54	29	50	76	5	2.2	ANT60 40A 32 120	▲
BT 40	ER40	3.0 - 26.0	135	66	32	63	75	5	2.3	ANT60 40A 40 135	▲
BT 50	ER32	3.0 - 20.0	120	58	24	50	76	5	4.5	ANT60 50A 32 120	▲
BT 50	ER40	3.0 - 26.0	135	73	24	63	76	5	4.5	ANT60 50A 40 135	▲



DIN 69893-HSK-A

Size	Type	Ø-Range	L	l ₁	l ₂	D	d ₁	SW	kg	Order Number	Stock
HSK 63	ER32	3.0 - 20.0	120	49	29	50	76	5	2	ANH60 63A 32 120	▲
HSK 63	ER40	3.0 - 26.0	135	64	29	63	76	5	1.9	ANH60 63A 40 135	▲
HSK 100	ER32	3.0 - 20.0	120	67	24	50	76	5	3.4	ANH60 100A 32 120	▲
HSK 100	ER40	3.0 - 26.0	135	82	24	63	76	5	3.3	ANH60 100A 40 135	▲



Incluso nella fornitura: Dado di bloccaggio per tenuta stagna e tubo per liquidi refrigeranti

Scope of delivery: Collet nut for seal disk and coolant tube included

Pinze e rondelle pagina 88

Collets and seal disc page 88

Parti di Ricambio

Spare Parts

Size	①
	C00 03 44

Tubo per Refrigerante

Coolant Tube

Size	②
63	H00 63 01
100	H00 100 01

Ø 5.80 – 33.10 mm

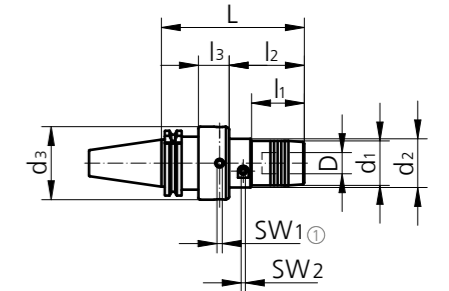


Mandrino Idraulico Espandibile

Compensating Hydraulic Chuck

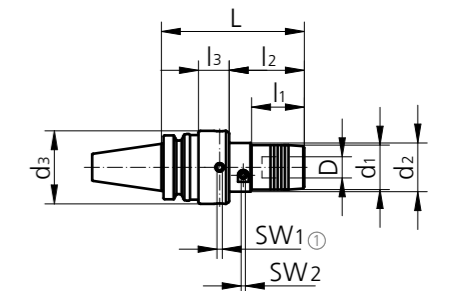
DIN 69871-AD

Size	L	l ₁	l ₂	l ₃	D	d ₁	d ₂	d ₃	SW ₁	SW ₂	kg	Order Number	Stock
SK 40	135	50	71	29	20	42	46	69	5	4	2.5	AND65 40A 20 135	○
SK 40	180	111	-	34	32	62	-	88	6	6	3.8	AND65 40A 32 180	○
SK 50	160	70	92	34	20	42	46	69	5	4	5	AND65 50A 20 160	○
SK 50	180	111	-	34	32	62	-	88	6	6	6.4	AND65 50A 32 180	○



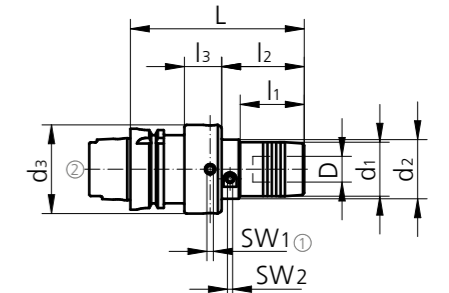
MAS-BT JIS 6339-AD

Size	L	l ₁	l ₂	l ₃	D	d ₁	d ₂	d ₃	SW ₁	SW ₂	kg	Order Number	Stock
BT 40	135	50	71	29	20	42	46	69	5	4	2.5	ANT65 40A 20 135	○
BT 40	180	111	-	34	32	62	-	88	6	6	3.9	ANT65 40A 32 180	○
BT 50	135	50	73	24	20	42	46	69	5	4	4.8	ANT65 50A 20 135	○
BT 50	180	116	-	26	32	62	-	88	6	6	6.5	ANT65 50A 32 180	○



DIN 69893-HSK-A

Size	L	l ₁	l ₂	l ₃	D	d ₁	d ₂	d ₃	SW ₁	SW ₂	kg	Order Number	Stock
HSK 63	135	50	64	29	20	42	46	69	5	4	2.2	ANH65 63A 20 135	○
HSK 63	180	104	-	34	32	62	-	88	6	6	4.2	ANH65 63A 32 180	○
HSK 100	135	50	82	24	20	42	46	69	5	4	3.4	ANH65 100A 20 135	○
HSK 100	165	110	-	26	32	62	-	88	6	6	4.9	ANH65 100A 32 165	○



Incluso nella fornitura Tubo per liquidi refrigeranti

Scope of delivery: Coolant tube included

Riduttori a pagina 88. Per altre informazioni www.schunk.com

Reducers are on page 88. For further dimensions see www.schunk.com

Parti di Ricambio

Spare Parts

D	①
20	C00 03 44
32	C00 03 45

Tubo per Refrigerante

Coolant Tube

Size	②
63	H00 63 01
100	H00 100 01

- A magazzino
On stock
- ▲ Disponibilità in breve periodo
Short-term availability
- Disponibilità su richiesta
Availability on request

Tutte le dimensioni in mm
All dimensions in mm

Ø 5.80 – 33.10 mm

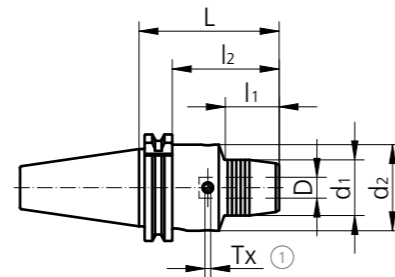


Mandrino Idraulico Espandibile SCHUNK «Tendo Zero»

Schunk "Tendo Zero" Hydro-Compensation Chuck

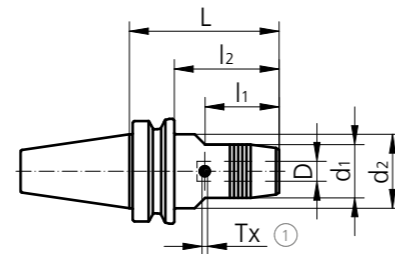
DIN 69871-AD/B

Size	L	l ₁	l ₂	D	d ₁	d ₂	Tx	kg	Schunk Order Number	Stock
SK 40	81	34	62	20	42	50	T15	1.4	204266 Z	▲
SK 40	81	26	62	32	63	80	T15	2	204267 Z	▲
SK 50	81	34	62	20	42	50	T15	3.3	204246 Z	▲
SK 50	104	63	84	32	64	70	T15	4.4	204247 Z	○



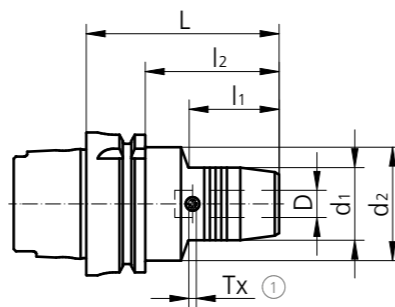
MAS-BT JIS 6339-AD/B

Size	L	l ₁	l ₂	D	d ₁	d ₂	Tx	kg	Schunk Order Number	Stock
BT 30	90	48	63	20	42	45	T15	1.5	205636 Z	▲
BT 40	90	48	63	20	42	45	T15	1.5	204445 Z	▲
BT 50	90	34	52	20	42	45	T15	4	204457 Z	▲
BT 50	120	63	82	32	64	70	T15	5.3	204458 Z	▲



DIN 69893-HSK-A

Size	L	l ₁	l ₂	D	d ₁	d ₂	Tx	kg	Schunk Order Number	Stock
HSK 63	90	48	64	20	42	50	T15	1.3	204056 Z	▲
HSK 63	120	59	94	25	57	63	T15	2.2	204057 Z	▲
HSK 63	125	63	99	32	64	75	T15	2.7	204058 Z	▲
HSK 100	105	59	76	20	42	50	T15	2.8	204066 Z	▲
HSK 100	110	62	81	25	57	63	T15	2.8	204067 Z	▲
HSK 100	110	62	81	32	64	75	T15	3.8	204068 Z	▲



* Tubo per liquidi di raffreddamento non incluso. Riduttori a pagina 88.

* Coolant tube is not included.

per altre informazioni www.schunk.com

Reducers are on page 88.

For further dimensions see www.schunk.com

Parti di Ricambio

Spare Parts

Size	①
	9954676

Tubo per Refrigerante

Coolant Tube

Size	②
63	H00 63 01
100	H00 100 01

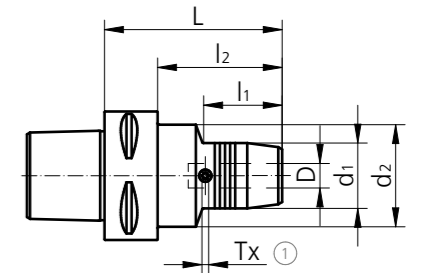
Ø 5.80 – 33.10 mm

Mandrino Idraulico Espandibile SCHUNK «Tendo Zero»

Schunk "Tendo Zero" Hydro-Compensation Chuck

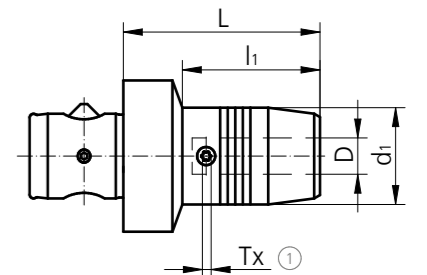
ISO 26623-1-PSC

Size	L	l ₁	l ₂	D	d ₁	d ₂	Tx	kg	Schunk Order Number	Stock
PSC 50	90	52	-	20	42	50	T15	1.05	201846 Z	▲
PSC 63	97	55	-	20	42	63	T15	1.6	201856 Z	▲
PSC 63	110	62	-	32	63	63	T15	2.8	201858 Z	▲



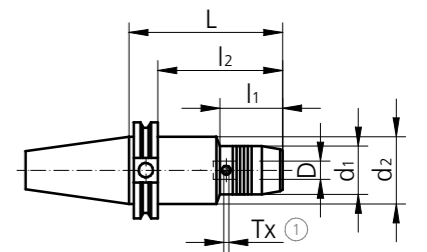
ABS-H

Size	L	l ₁	l ₂	D	d ₁	d ₂	Tx	kg	Schunk Order Number	Stock
ABS 50	75	58	-	20	42	-	T15	0.9	204576 Z	▲



ASME B5.50-CAT-AD/B

Size	L	l ₁	l ₂	D	d ₁	d ₂	Tx	kg	Schunk Order Number	Stock
CAT 40	102	50	83	20	38	45	T15	2	203666 Z	○
CAT 50	102	50	83	20	42	70	T15	2.8	204666 Z	○
CAT 50	102	65	83	32	64	70	T15	4.1	204668 Z	○



Riduttori a pagina 88.

per altre informazioni www.schunk.com

Reducers are on page 88.

For further dimensions see www.schunk.com

Parti di Ricambio

Spare Parts

Size	①
	9954676

● A magazzino
On stock

▲ Disponibilità in breve periodo
Short-term availability

○ Disponibilità su richiesta
Availability on request

Tutte le dimensioni in mm
All dimensions in mm

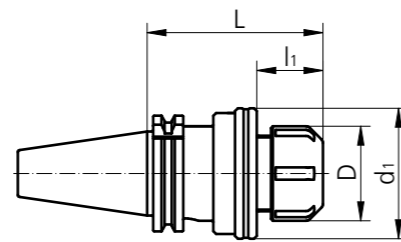
Ø 5.80 – 33.10 mm



Mandrino Flottante
Floating Chuck

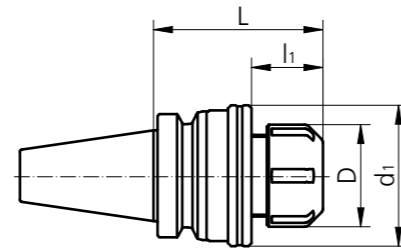
DIN 69871-AD

Size	Type	Ø-Range	L	l ₁	D	d ₁	OZ	kg	Order Number	Stock
SK 40	ER25	3.0 - 16.0	88	26	42	57	± 1	-	PD60 40A 25 088	○
SK 40	ER32	3.0 - 20.0	93	27	50	69	± 1	-	PD60 40A 32 093	○
SK 40	ER40	3.0 - 26.0	99	33	63	79	± 1	-	PD60 40A 40 099	○
SK 50	ER25	3.0 - 16.0	88	26	42	57	± 1	-	PD60 50A 25 088	○
SK 50	ER32	3.0 - 20.0	93	27	50	69	± 1	-	PD60 50A 32 093	○
SK 50	ER40	3.0 - 26.0	99	33	63	79	± 1	-	PD60 50A 40 099	○



MAS-BT JIS 6339-AD

Size	Type	Ø-Range	L	l ₁	D	d ₁	OZ	kg	Order Number	Stock
BT 30	ER20	3.0 - 13.0	70	-	35	-	± 1	-	PT60 30A 20 070*	○
BT 40	ER25	3.0 - 16.0	78	26	42	57	± 1	-	PT60 40A 25 078*	○
BT 40	ER32	3.0 - 20.0	83	27	50	69	± 1	-	PT60 40A 32 083*	○
BT 40	ER40	3.0 - 26.0	89	33	63	79	± 1	-	PT60 40A 40 089*	○
BT 50	ER25	3.0 - 16.0	88	26	42	57	± 1	-	PT60 50A 25 088*	○
BT 50	ER32	3.0 - 20.0	93	27	50	69	± 1	-	PT60 50A 32 093*	○
BT 50	ER40	3.0 - 26.0	99	33	63	79	± 1	-	PT60 50A 40 099*	○



Incluso nella fornitura: Controdado per disco di tenuta

Scope of delivery: Collet nosepiece for seal disk included

Pinze e rondelle pagina 88

Collets and seal disc page 88

OZ Range Oscillazione

Floating range

● A magazzino On stock
▲ Disponibilità in breve periodo Short-term availability
○ Disponibilità su richiesta Availability on request

Tutte le dimensioni in mm
All dimensions in mm

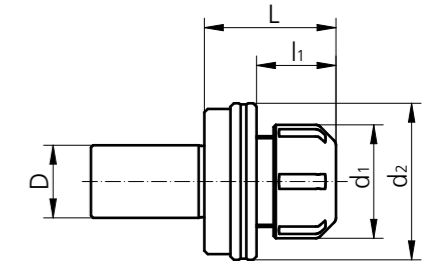
Ø 5.80 – 33.10 mm



Mandrino Flottante per Tornio
Floating Chuck for Lathes

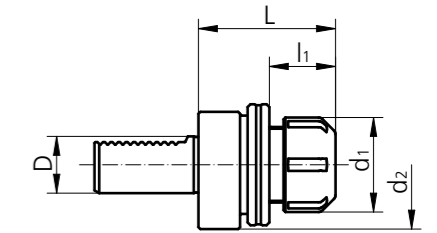
Cylindrical shaft DIN 1835-A

Adaptors	Type	Ø-Range	L	l ₁	D	d ₁	d ₂	OZ	kg	Order Number	Stock
ZS 20	ER25	3.0 - 16.0	53	26	20	42	57	± 1	0.6	PZ60 25 20 053	●
ZS 25	ER32	3.0 - 20.0	58	27	25	50	69	± 1.5	1.0	PZ60 32 25 058	●
ZS 32	ER32	3.0 - 20.0	58	27	32	50	69	± 1.5	1.1	PZ60 32 32 058	●
ZS 25	ER40	3.0 - 26.0	64	33	25	63	79	± 1.5	1.4	PZ60 40 25 064	●
ZS 32	ER40	3.0 - 26.0	64	33	32	63	79	± 1.5	1.5	PZ60 40 32 064	●



DIN 69880-VDI

Adaptors	Type	Ø-Range	L	l ₁	D	d ₁	d ₂	OZ	kg	Order Number	Stock
VDI 20	ER25	3.0 - 16.0	57	26	20	42	57	± 1	-	PV60 25 20 057	○
VDI 30	ER25	3.0 - 16.0	64	26	30	42	68	± 1	-	PV60 25 30 064	○
VDI 30	ER32	3.0 - 20.0	72	27	30	50	68	± 1.5	-	PV60 32 30 072	●
VDI 40	ER32	3.0 - 20.0	74	27	40	50	83	± 1.5	1.9	PV60 32 40 074	●
VDI 40	ER40	3.0 - 26.0	74	33	40	63	83	± 1.5	-	PV60 40 40 074	●



Incluso nella fornitura: Controdado per disco di tenuta

Scope of delivery: Collet nosepiece for seal disk included

Altre dimensioni su richiesta

Other dimensions on request

Pinze e rondelle pagina 88

Collets and seal disc page 88

ZS Attacco cilindrico

Cylindrical shank

OZ Range Oscillazione

Floating range

● A magazzino On stock
▲ Disponibilità in breve periodo Short-term availability
○ Disponibilità su richiesta Availability on request

Tutte le dimensioni in mm
All dimensions in mm

Accessori

Accessories

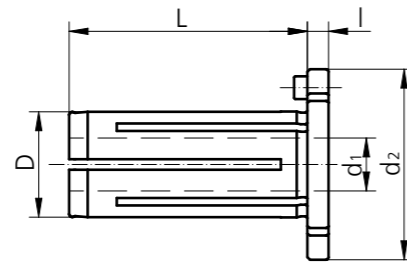
Accessori e Parti di Ricambio per Mandrini a Compensazione

Accessories and Spare Parts for Compensation Holder

Riduttori per Mandrini Idraulici a Compensazione

Reducers for Hydro-Compensation Chuck

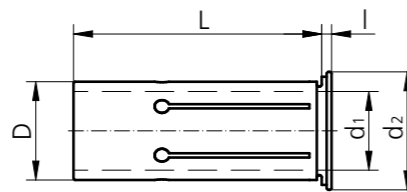
L	l	D	d ₁	d ₂	Order Number	Stock
49	4	20	12	36	67 20 12	●
49	4	20	16	36	67 20 16	●
69	4	32	20	51	67 32 20	●
69	4	32	25	51	67 32 25	●



Riduttori per Mandrini Idraulici a Compensazione «Schunk»

Reducers for Hydro-Compensation Chuck "Schunk"

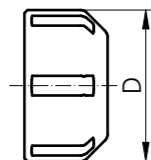
L	l	D	d ₁	d ₂	Order Number	Stock
50.5	2	20	12	24.0	0207929	●
50.5	2	20	16	24.0	0207933	●
60.5	3	32	20	35.5	0207947	●
60.5	3	32	25	35.5	0207948	●



Dado di Bloccaggio

Collet Nut for Seal Disk

Type	D	Thread	Order Number	Stock
ER20	34	M25 x 1.5	20.107.310	●
ER25	42	M32 x 1.5	20.107.410	●
ER32	50	M40 x 1.5	20.107.510	●
ER40	63	M50 x 1.5	20.107.610	●



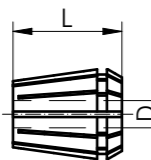
Incluso nella fornitura

Included in delivery

Pinze

Collets

Type	D	L	Order Number	Stock
ER20	3.0 - 13.0	31.5	62 20 XX	●
ER25	3.0 - 16.0	35	62 25 XX	●
ER32	3.0 - 20.0	40	62 32 XX	●
ER40	3.0 - 26.0	46	62 40 XX	●

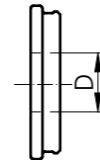


XX = ø D Example: D = 12 = 62 25 12

Rondella per Tenuta Stagna

Seal Disc for Collet Nut

Type	D	Order Number	Stock
ER20	3.0 - 13.0	20.107.31XXX	●
ER25	3.0 - 16.0	20.107.41XXX	●
ER32	3.0 - 20.0	20.107.51XXX	●
ER40	3.0 - 26.0	20.107.61XXX	●

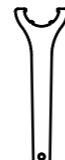


XXX = ø D Ø insert holders
Example: D = 12 = 20.107.41120

Chiave per Serraggio Dadi

Key for Collet Nut

Type	Order Number	Stock
ER20	00 05 12	●
ER25	00 05 05	●
ER32	00 05 02	●
ER40	00 05 03	●



Accessori

Accessories

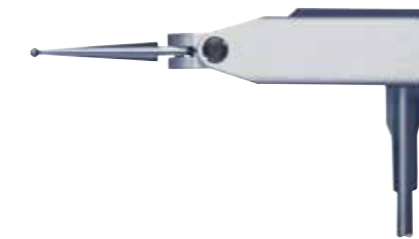
Dispositivo di Misurazione

Measuring Device

Type	Description	Order Number	Stock
Twin T10	Dispositivo di misurazione elettronico, batterie incl. Electronic measuring instrument, batteries incl.	04430013	○
LRC 6, AA	Batterie (3 pz.) Batteries (3 piece)	04768002	○
GT 31	Tastatore Lever probe	03210802	○
MGA	Supporto magnetico con braccio articolato Magnetic articulated arm	01639022	○



Twin T10



GT 31



MGA



URMA AG WERKZEUGFABRIK

Obermatt 3
CH-5102 Rapperswil
Switzerland
T +41 62 889 20 20
F +41 62 889 20 28
info@urma.ch
www.urma.ch

SWISS  QUALITY



Download on the
 **App Store**



ANDROID APP ON
 **Google play**



Subsidiaries

URMA GmbH
Eisenbahnstraße 37
DE-77815 Bühl
+49 7223 911 170
info@urma-gmbh.de

URMA Trading (Shanghai) Co. Ltd.
Room 511, Hua Nan Mansion
1988 Dongfang Road
Pudong New District
CN-200125 Shanghai
+86 (21) 6109 6216
info@urmachina.com

Iraupen URMA
Polígono Belartza
ES-20018 Donostia-San Sebastian
Spain
+34 943 667 036
info@iraupen.es

License Manufacturer

Command Tooling Systems, LLC
13931 Sunfish Lake Blvd.
Ramsey MN, 55303 USA
+1 800 328 2197
support@commandtool.com

Paul Horn GmbH
Unter dem Holz 33-35
DE-72072 Tübingen
+49 (0) 7071 7004 0
info@phorn.de

Sumitomo Electric Ind., Ltd.
1-1-1, Koyakita,
Itami-shi, Hyogo 664-0016
Japan
+81 72 772 4535
info@sumitomotool.com